



Upgrade to 4G antenna

This guide shows you how to retrofit a 4G/LTE antenna into monitors that have a 3G antenna.

Written By: Tanya Taylor



INTRODUCTION

Monitors purchased before May 2020 were fitted with a Wi-Fi/GSM cellular antenna. However, if you need a 4G/LTE connection, you can replace that antenna with a LTE/GPS antenna using an upgrade antenna kit. The replacement antenna forgoes Wi-Fi but adds GPS capability. If required, you can maintain Wi-Fi by adding an internal Wi-Fi antenna to the monitor's embedded PC.



TOOLS:

- [Large Phillips head screwdriver](#) (1)
- [19mm adjustable wrench](#) (1)



PARTS:

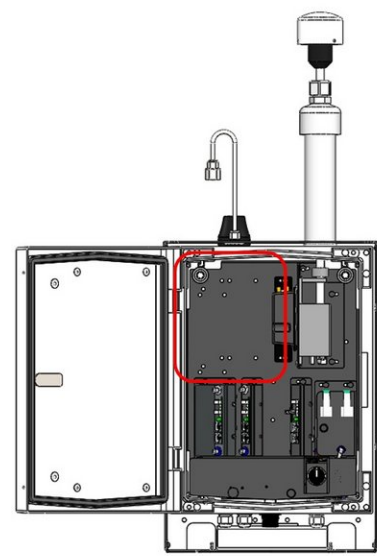
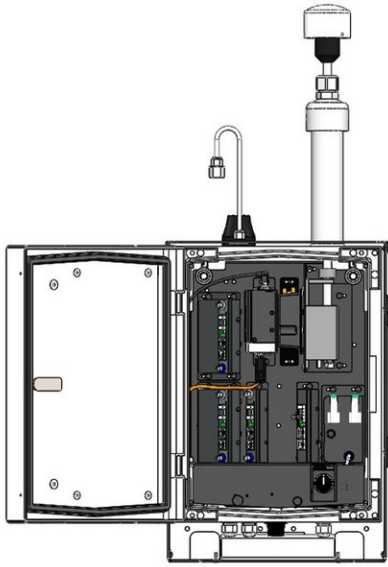
- [Retrofit 4G antenna](#) (1)

Step 1 — Overview



- The monitor has a built-in cellular antenna on the outside roof of the enclosure (left side).

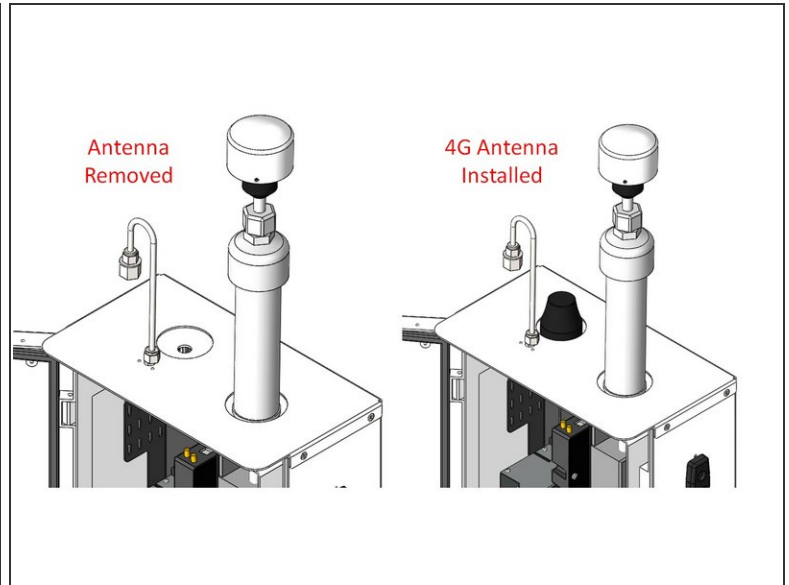
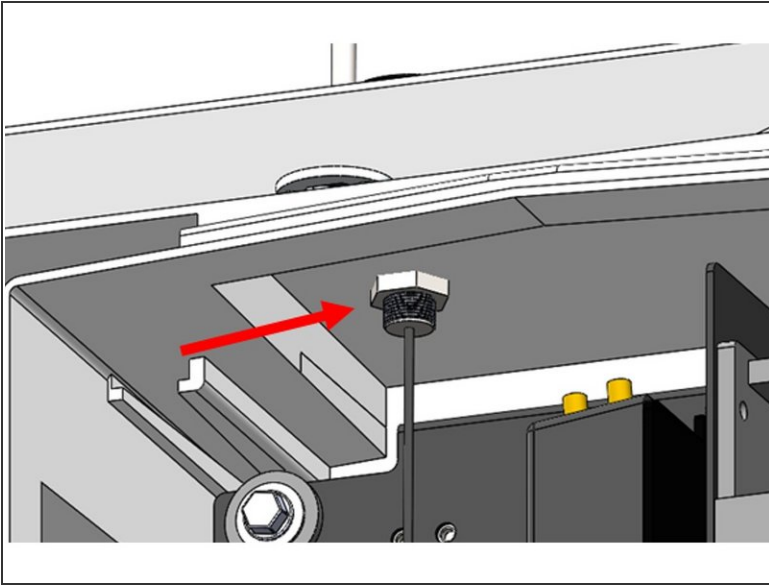
Step 2 — Remove internal components



Disconnect power from the monitor.

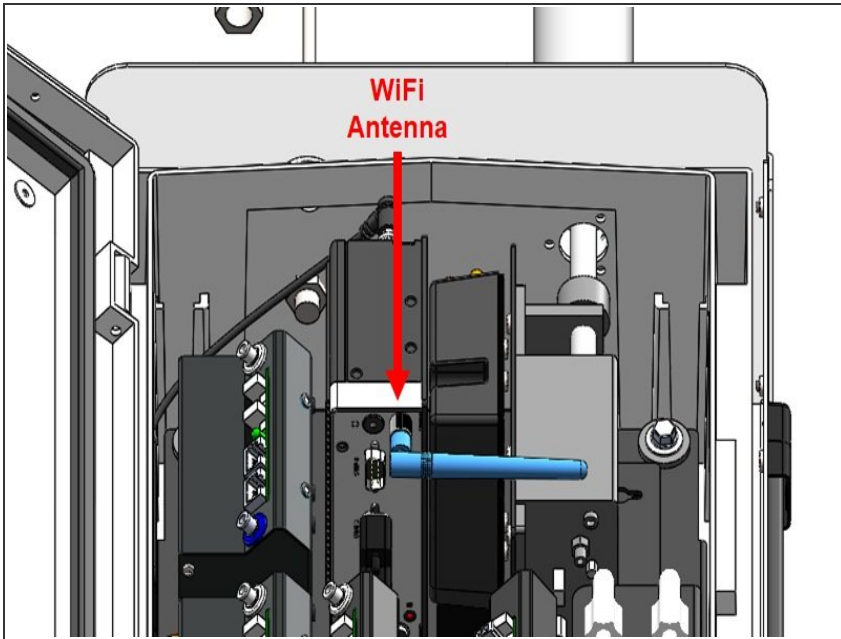
- Open the door and disconnect antenna leads from the embedded PC and modem (if installed).
- Disconnect the power and DB9 connectors from the embedded PC. Take note of which port each cable is plugged into as incorrect re-connection could result in sensors appearing offline.
- Remove all components from the top left of the monitor - the embedded PC and, in the case of the AQS 1, the gas modules and gas inlet tubing.

Step 3 — Replace antenna



- Loosen the antenna retaining nut and remove the old antenna from the top of the monitor.
- Position the new 4G antenna and secure it using the supplied locknut and washer.

Step 4 — Reinstall components



- Reinstall the embedded PC and connect power and communications wiring.
- Connect the antenna wiring to the modem (LTE cable to cellular connection, and GPS to GPS connection on modem, if your modem has GPS capabilities).
- Connect the internal Wi-Fi antenna to the embedded PC Wi-Fi connection.
- If you have an AQS 1, reinstall the gas modules and gas inlet tubing.
- Close the door and reconnect the power.

For further support, contact [Technical Support](#).