



Mount monitor to pole

Written By: Tanya Taylor





TOOLS:

- [Large Phillips head screwdriver](#) (1)
- [Adjustable spanner](#) (1)

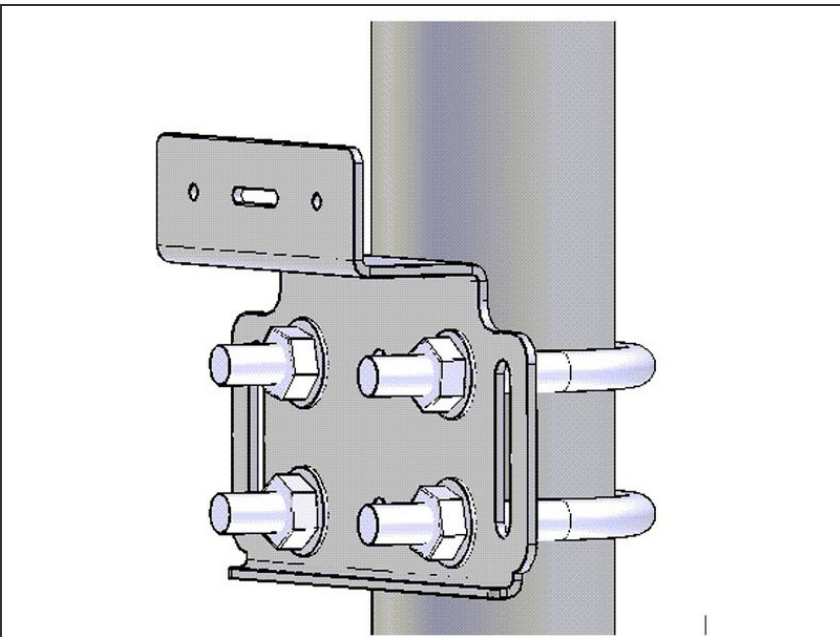
Step 1 — Mounting parts



- The monitor comes with:
 - 2 x mounting brackets
 - 3 x U-bolts for 45mm (1½") diameter poles
 - 2 x metal bands for pole diameters between 21-44mm (1-1½")
 - 2 x metal bands for pole diameters between 59-82mm (2-3").

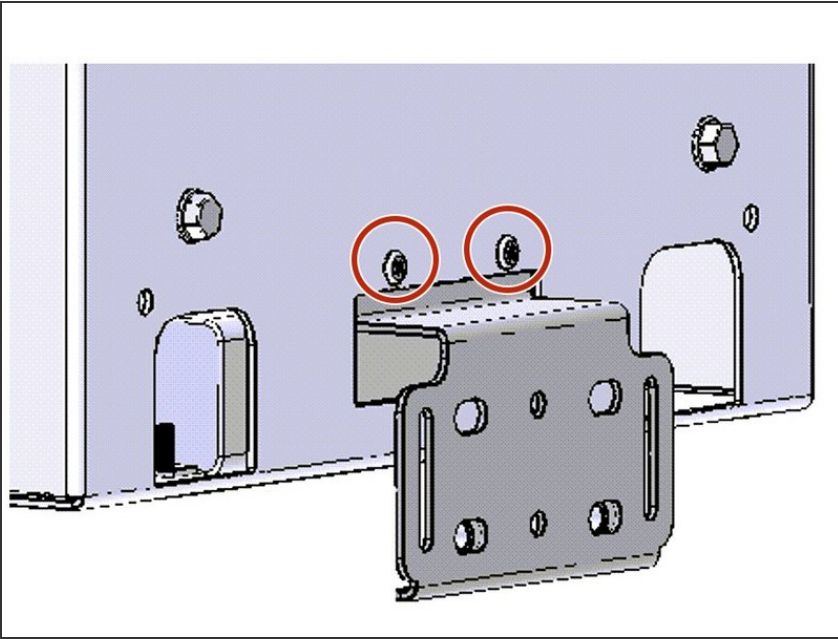
i The brackets can be used for either pole or fence mounting.

Step 2



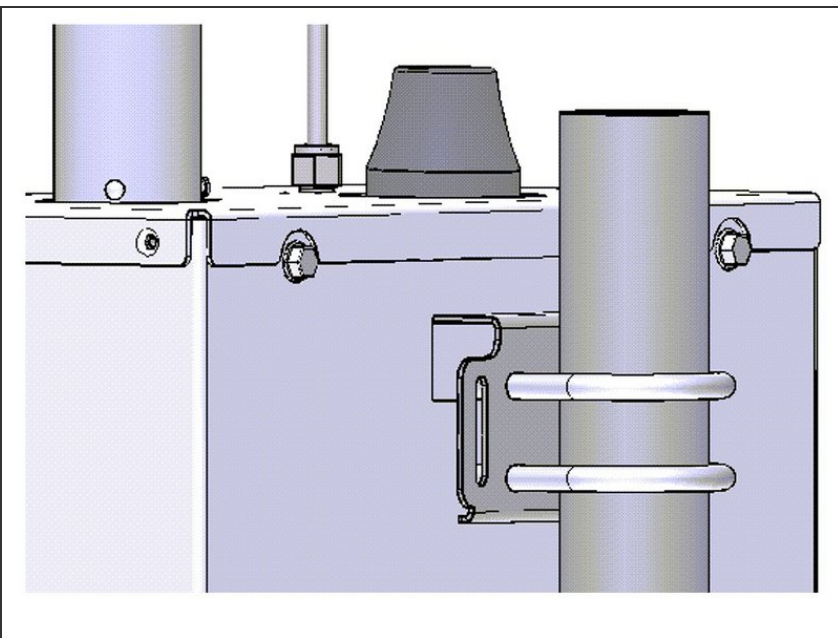
- For pole mounting, secure the top mounting bracket at a suitable height using two U-bolts or metal bands.
- For fence mounting, screw the brackets into the fence instead of using the U-bolts."

Step 3



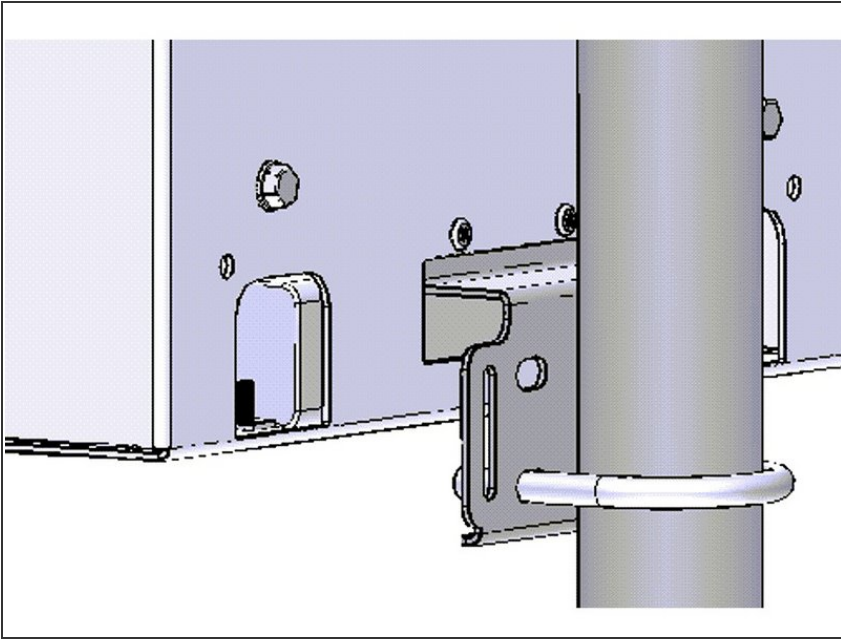
- Fix lower mounting bracket to the monitor's chassis with screws.

Step 4



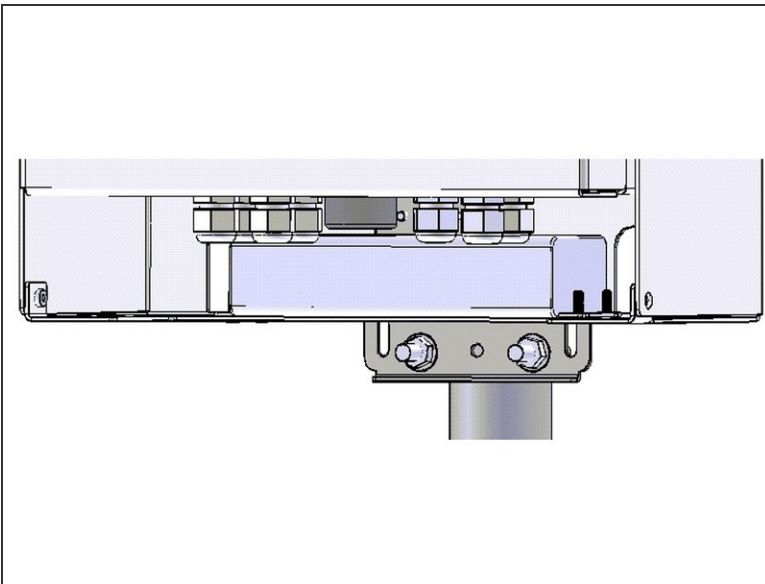
- Align the slot on the back of the monitor with the top mounting bracket and lower the monitor on to the bracket.

Step 5



- Place U-bolt or metal band through lower mounting bracket.
- ⓘ Note: Only one U-bolt is used to secure the bottom bracket.

Step 6



- Add nuts and washers and tighten the bottom U-bolt into position.

Step 7 — Video of steps



- For extra help, watch our video.

For further support, contact [Technical Support](#).