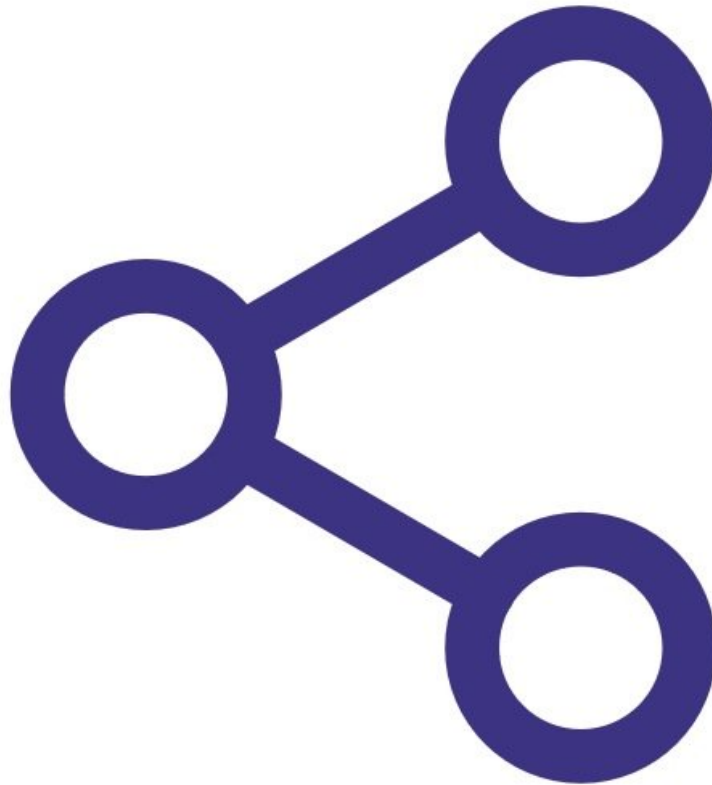




Connect third-party sensor using AUX module

All you need to know to attach third-party sensors such as weather stations and noise meters.

Written By: Tanya Taylor





TOOLS:

- [Small flat head screwdriver](#) (1)



PARTS:

- [Vaisala weather sensor](#) (1)
- [Met One weather sensor](#) (1)
- [Cirrus noise sensor](#) (1)
- [Gill Windsonic wind sensor](#) (1)
- [Li-Cor LI-200 pyranometer](#) (1)

Step 1 — Overview



- Your Aeroqual monitor supports the following third-party sensors:
 - MSO weather station from Met One
 - MK427 noise meter from Cirrus
 - WXT536 weather station from Vaisala
 - Windsonic from Gill Instruments
 - LI-200 Pyranometer from Li-Cor

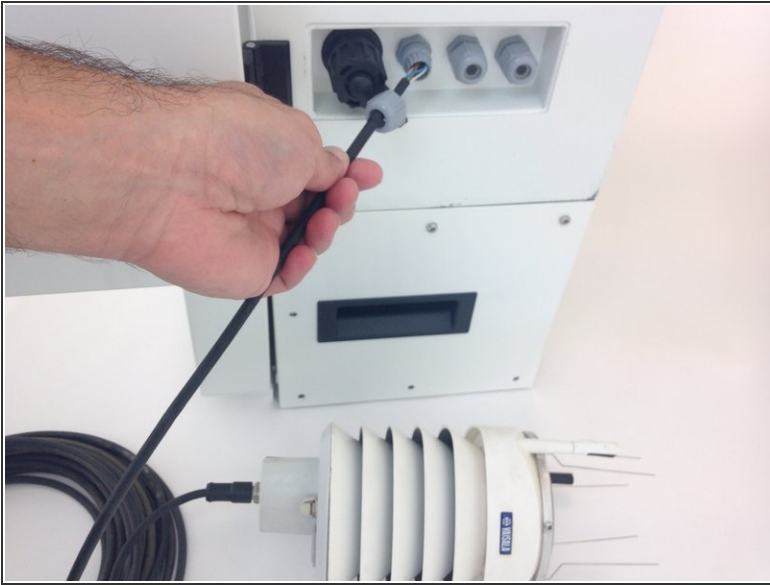
Step 2 — Auxiliary module




- If you bought your monitor before October 2019, you need to wire your third-party sensor to the AUX module.
- The AUX module gives power to an external sensor and processes data from the sensor. The module uses a 12-way green connector to connect to the external sensor.

⚠ If you bought your monitor after October 2019, [you can connect some third-party sensors using virtual AUX.](#)

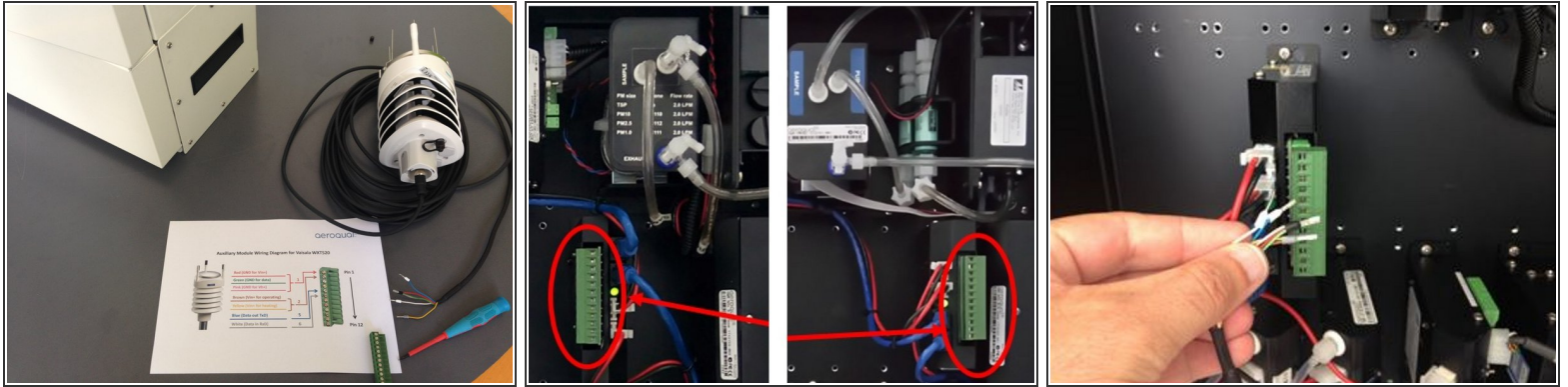
Step 3 — Feed cable



Disconnect power from the monitor.

- Thread the sensor's cable through a free cable gland on the outside of the monitor. The gland could be on a side wall or the underside of the monitor. It depends on the model.
-  To check the operation of the third-party sensor in your office or laboratory prior to site installation, this step isn't mandatory.

Step 4 — Wire cable




- To learn about the specific wiring configuration for your third-party sensor, download the relevant document at the bottom of this guide.
- Before you start wiring, check the orientation of the green 12-way connector on the front of the AUX module. Take note of the numbering. If the module and connector are flipped, you'll need to account for that when you wire.
- Wire the cable from the third party sensor into the green connector.

Step 5 — View sensor settings

Manage Data ▾ Air Quality Monitor (AQM65 12022016-497)			
operation	From 03/26/2017	To 04/02/2017	Averaging period 1 hour Update
			<div> 10 minutes 15 minutes 20 minutes 30 minutes 1 hour 2 hours 4 hours 8 hours 12 hours Daily </div>
Time			O3 ppm
4/2/2017 10:00 PM			
4/2/2017 9:00 PM			
4/2/2017 8:00 PM			
4/2/2017 7:00 PM			0.046
4/2/2017 6:00 PM			0.049
4/2/2017 5:00 PM			0.051
4/2/2017 4:00 PM			0.055
4/2/2017 3:00 PM			0.053
4/2/2017 2:00 PM			0.053
4/2/2017 1:00 PM			0.052
4/2/2017 12:00 PM			0.121
4/2/2017 11:00 AM			0.090
4/2/2017 10:00 AM			0.076
4/2/2017 9:00 AM			0.055
4/2/2017 8:00 AM			0.034
4/2/2017 7:00 AM			0.021
4/2/2017 6:00 AM			0.012
4/2/2017 5:00 AM			0.006
4/2/2017 4:00 AM			0.011
			0.014
			0.014
			0.020

- When you're happy with the wiring, turn on the monitor.
- Wait a few minutes and log in to Aeroqual Connect.
- To view the parameters associated with the third-party sensor, go to the **Configure** app and click **Settings** from the side menu.
- To see data, go to **Manage Data**, and click **Charts** or **Table** from the side menu. Adjust the averaging period as required.

 Always keep the certificate of compliance that's shipped with the monitor.

For further support, contact [Technical Support](#).