



Mount monitor to surveyor's tripod

Written By: Tanya Taylor



INTRODUCTION

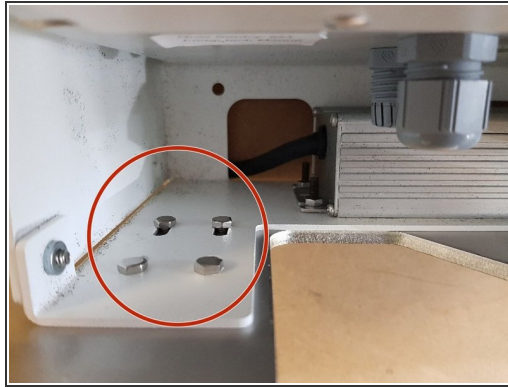
To complete this task, you need the survey tripod mount kit and a survey tripod with the standard 5/8" x 11 mounting screw.



PARTS:

- [Survey tripod mount kit](#) (1)
-

Step 1 — Attach mounting plate



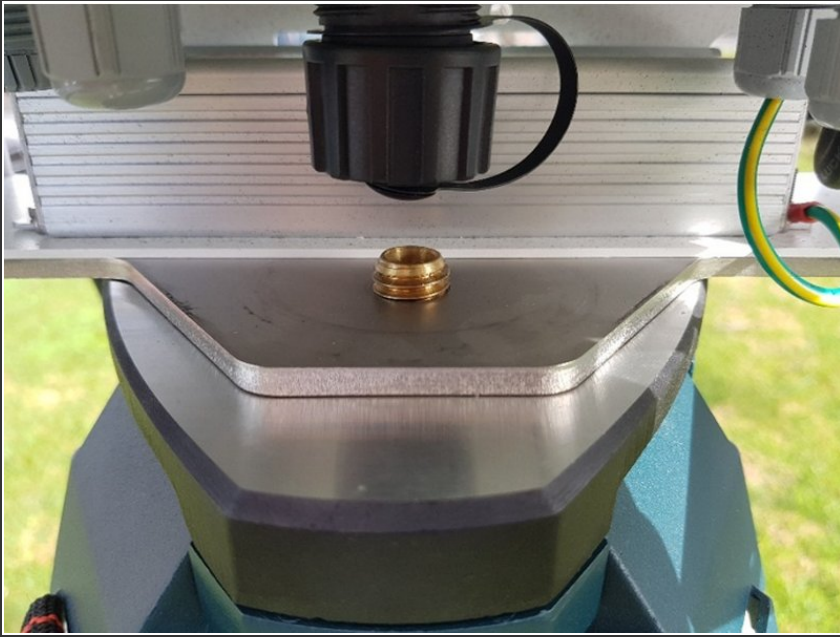
- Lay your monitor on a flat surface.
- Using the 8 x M4 hex head bolts and nuts, bolt the mounting plate to the monitor through the slots in the bottom of the monitor's solar shield.

Step 2 — Set up tripod



- Place the tripod in the desired location and secure it to the ground using the 6 provided pegs.

Step 3 — Attach monitor to tripod



- Attach the monitor to the tripod by screwing the tripod's mounting screw through the threaded hole in the mounting plate.
- ❗ Keep the mounting screw as close to the center of the tripod as possible so that the weight of the monitor is centered over all three legs.

Step 4 — Check installation



- Check the tripod is firmly secured to the ground. If it's not, there is a danger of the monitor falling over due to wind.
- If the supplied pegs aren't suitable for the ground type, you might need to find another way to secure the legs.
- For extra security, attach guy wires to the four holes in the corners of the mounting plate.
- Check the tripod attachment screw is firmly tightened and that the monitor is centered on the tripod.

For further support, contact [Technical Support](#).