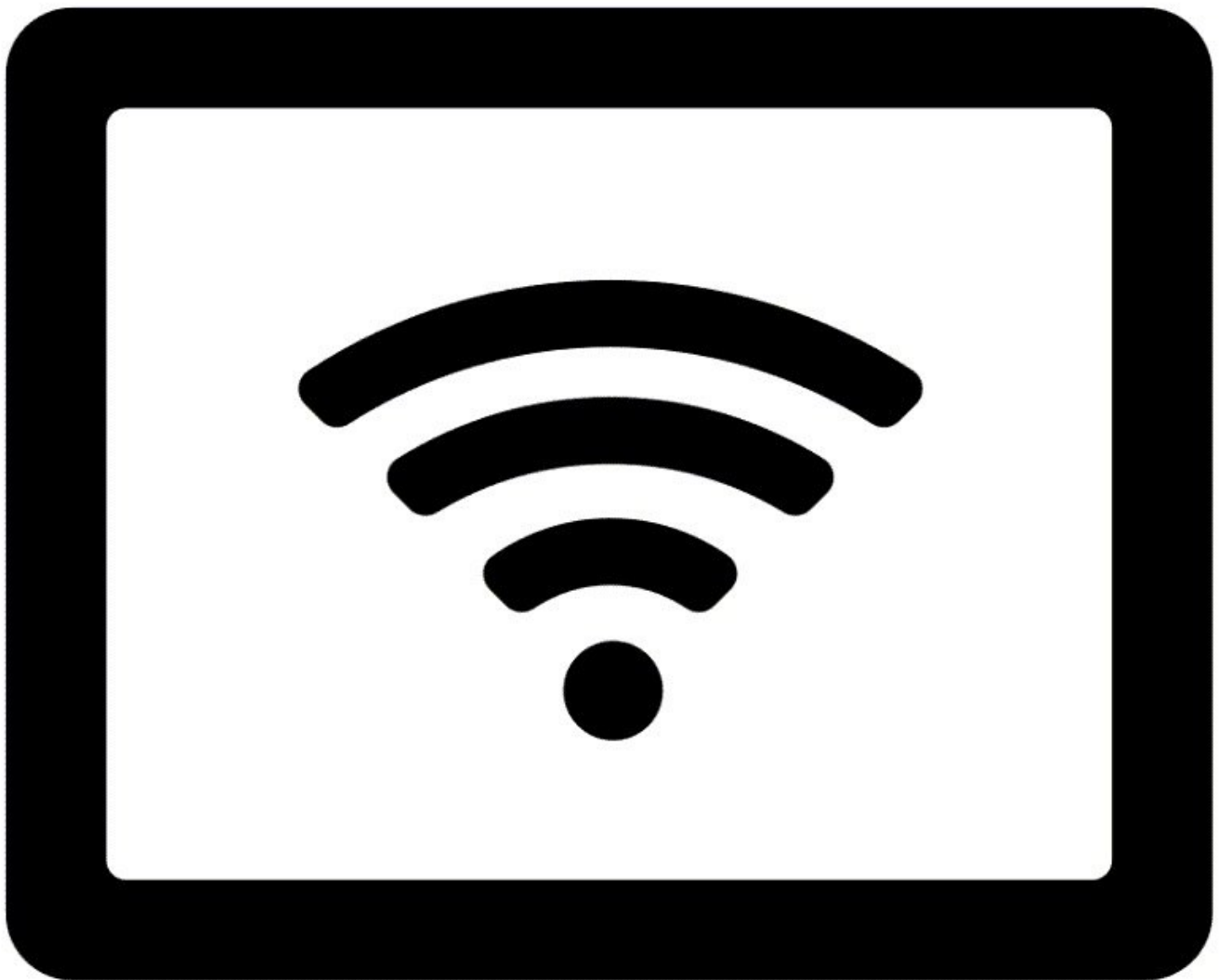




# Connect directly to monitor using built-in Wi-Fi

Connect to your monitor using its in-built software, Aeroqual Connect.

Written By: Tanya Taylor



## INTRODUCTION

This method of connection is for initial set up and when access to the internet is unavailable or limited.

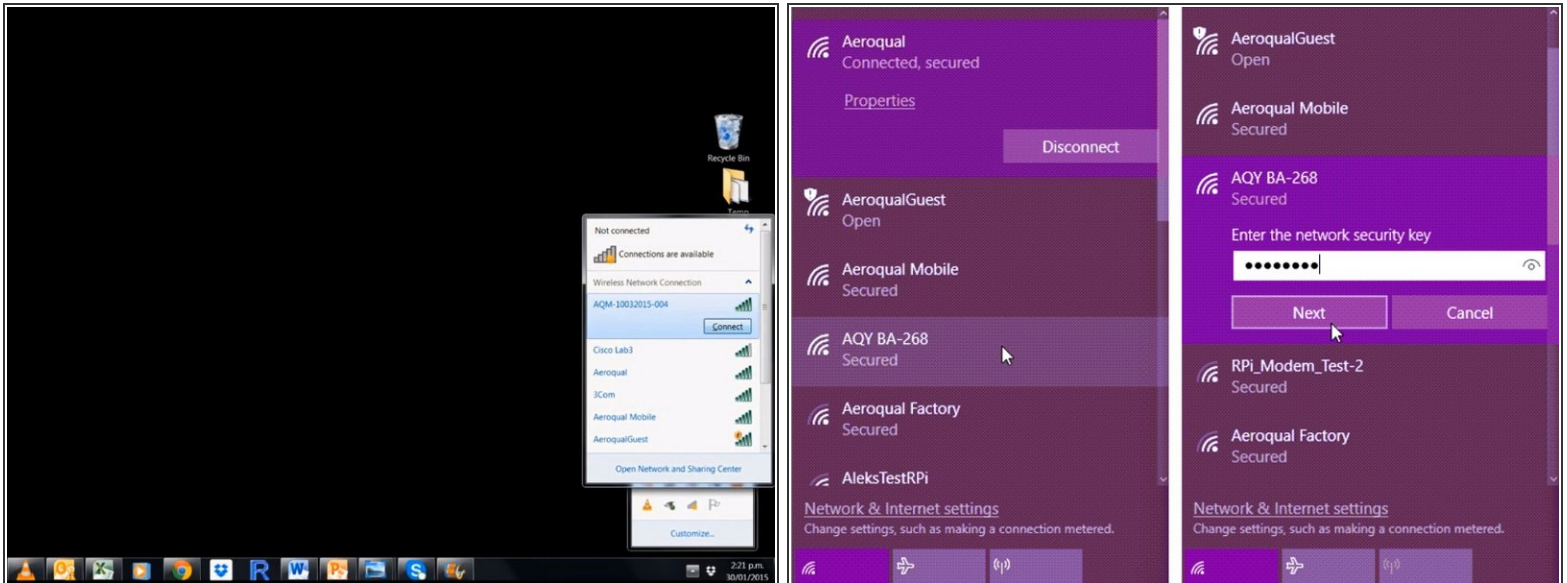
It is commonly used by engineers when they are onsite and want to perform routine maintenance or calibration.

The distance over which the Wi-Fi can be used is about 10 meters.

This method connects you to Aeroqual Connect software running on the ePC.

Use it to connect directly using your PC, laptop or smartphone.

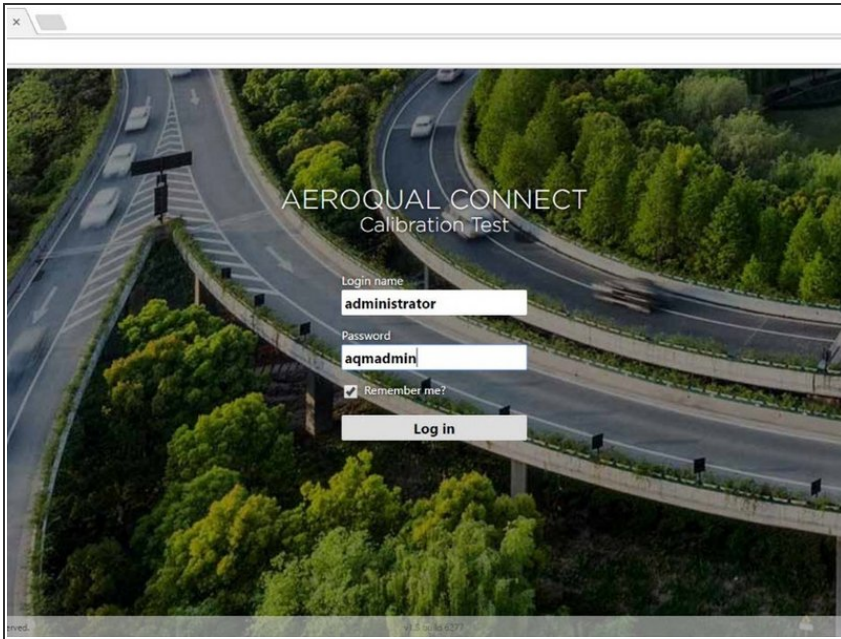
## Step 1 — Select Wi-Fi network



- The monitor ships from the Aeroqual factory as a Wi-Fi access point.
- The name of the Wi-Fi network (SSID) is the monitor's serial number.
- From your mobile, tablet or laptop, connect to this network using the password: **Aeroqual**

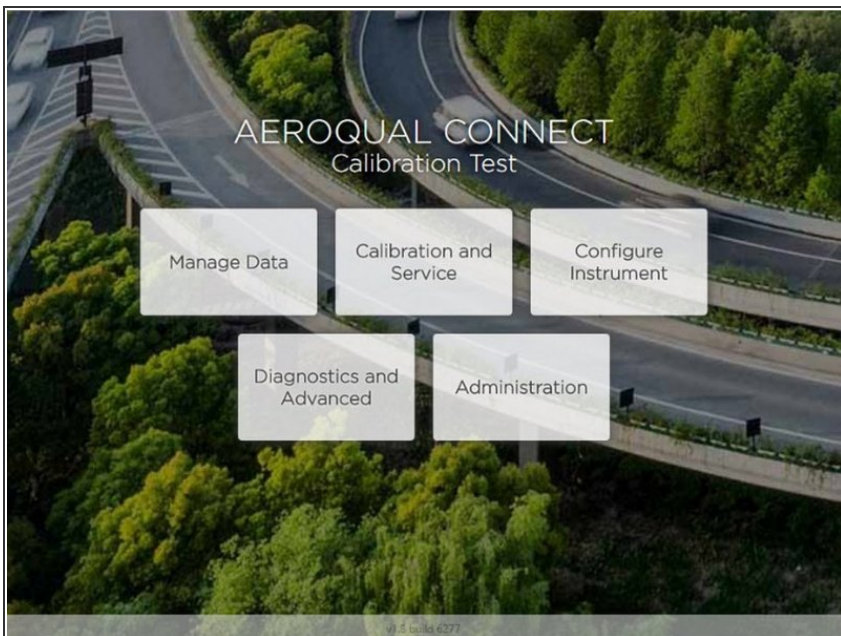
**⚠ If you were accessing the internet on your device using your office Wi-Fi, you will lose your internet connection.**

## Step 2 — Log in to Aeroqual Connect



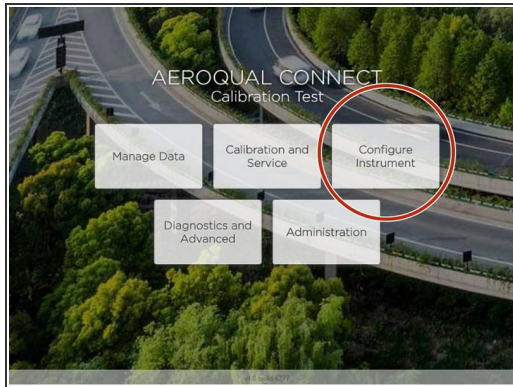
- Open a new browser tab and enter **10.10.0.1** in to the address bar. **10.10.0.1** is the local IP address of your monitor.
- When the login screen appears, log in as the default administrator:
  - Login name: **administrator**
  - Password: **aqmadmin**.

## Step 3 — Home screen



- The Aeroqual Connect home screen appears.

## Step 4 — View communication settings



System	Communications	Legacy
Serial Number <b>TEST-001</b>	Remote Config Interval <b>Every minute</b>	AQM ID <b>1</b>
Name <b>TEST-001</b>	Ethernet Mode <b>Auto (DHCP)</b>	Communications Port <b>TCP:4001</b>
Device Type <b>AQMv8</b>	Ethernet IP Address	Auto Data Report Enabled <input checked="" type="checkbox"/>
Software Version <b>1.1.0</b>	WiFi Mode <b>Access Point</b>	Auto Data Report Rate <b>Every minute</b>
Last Contact <b>&lt; 1 minute ago</b>	WiFi SSID <b>AQM-10032015-004</b>	
Time Zone <b>(UTC+12:00) Auckland</b>	WiFi Password <b>*****</b>	
Default Averaging Period <b>---</b>	WiFi IP Address <b>10.10.0.1</b>	

- To view your connection settings, click **Configure**.
- Click **Settings** from the side menu.
- In the **Communications** column, you can see that **Access point** is the **WiFi mode**. You can see the credentials you used to connect to the monitor (its serial number and default **Aeroqual** password).

## Step 5 — Video of steps



- To see the built-in Wi-Fi connection process using an AQY 1 monitor, watch this video.

For further support, contact [Technical Support](#).

This document was generated on 2021-12-22 06:56:15 PM (MST).

