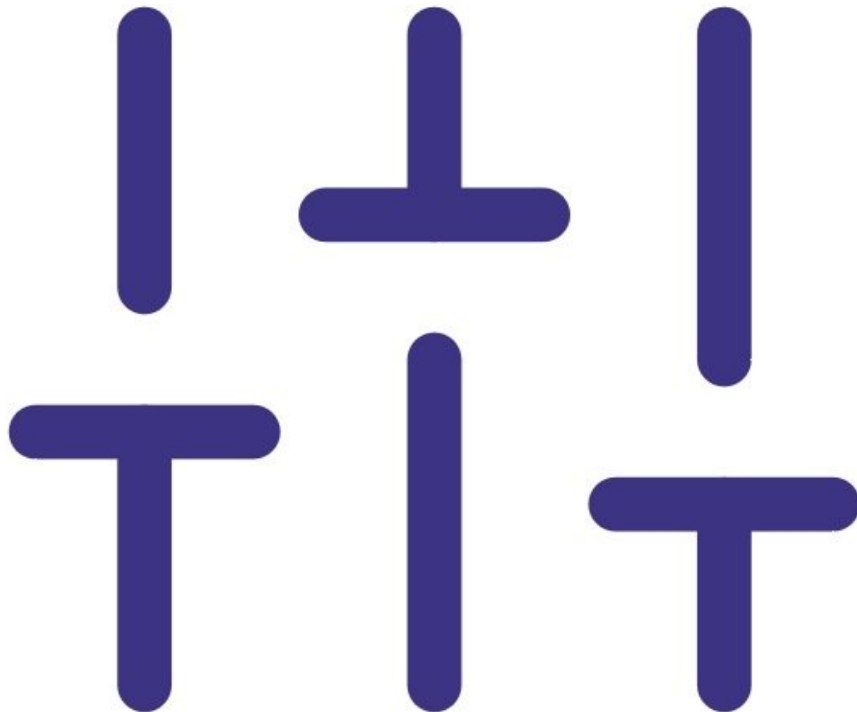




Change relay set point

Written By: Tanya Taylor

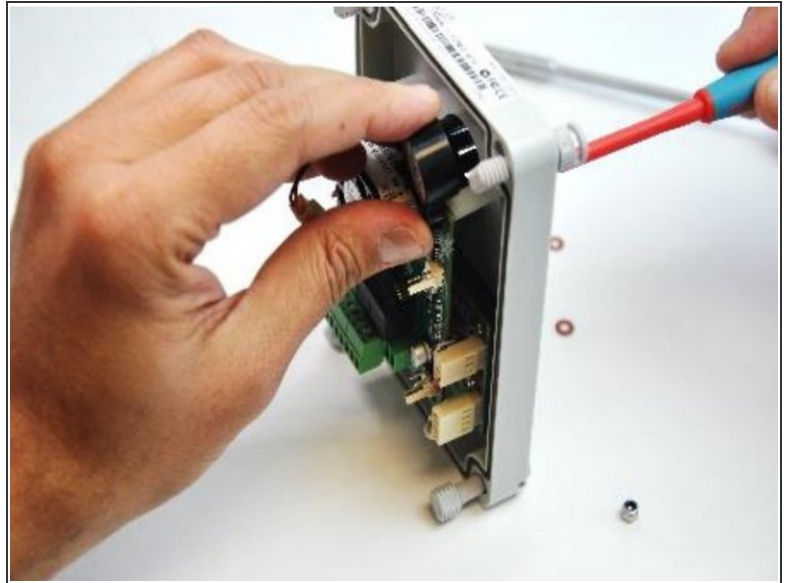
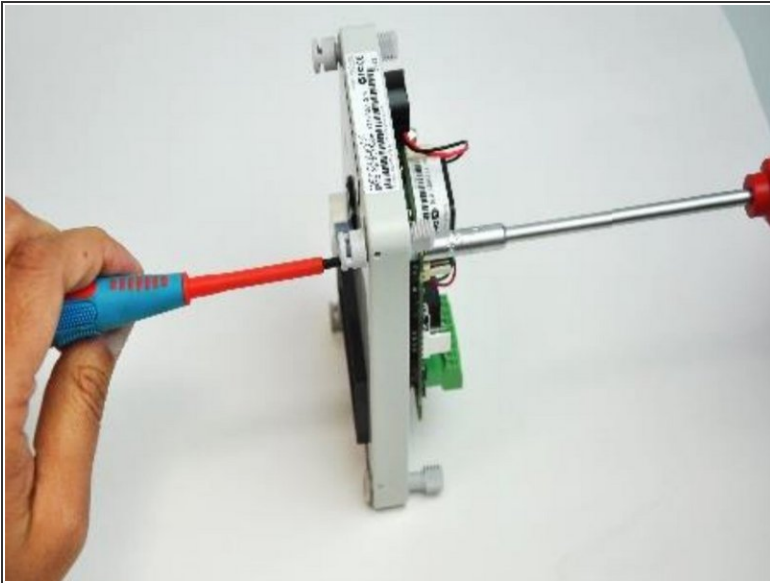


INTRODUCTION

The SM70 uses a relay set point to control when the onboard piezo buzzer is triggered. The set point also activates the relay switch, which controls any external device you might have fitted, such as an alarm, extractor fan or ozone generator.

You can alter the relay set point by adjusting the dip switch on the sensor board. The relay set point is factory set (unless otherwise specified) to **off on off on**.

Step 1 — Remove sensor board



- Remove the lid from the SM70 by unscrewing the 4 lid screws.
- Unscrew the sensor board from the back of the lid using a 5.5mm hexa-socket screwdriver. Use a flat head screwdriver to hold the 2 screws in place as you unscrew.

Step 2 — Adjust dip switch settings



- [Click here to see a table of settings](#) for each of the supported SM70 ozone sensors.
- Adjust the relay dip switch settings to create the set point that meets your specific needs.

For further support, contact [Technical Support](#).