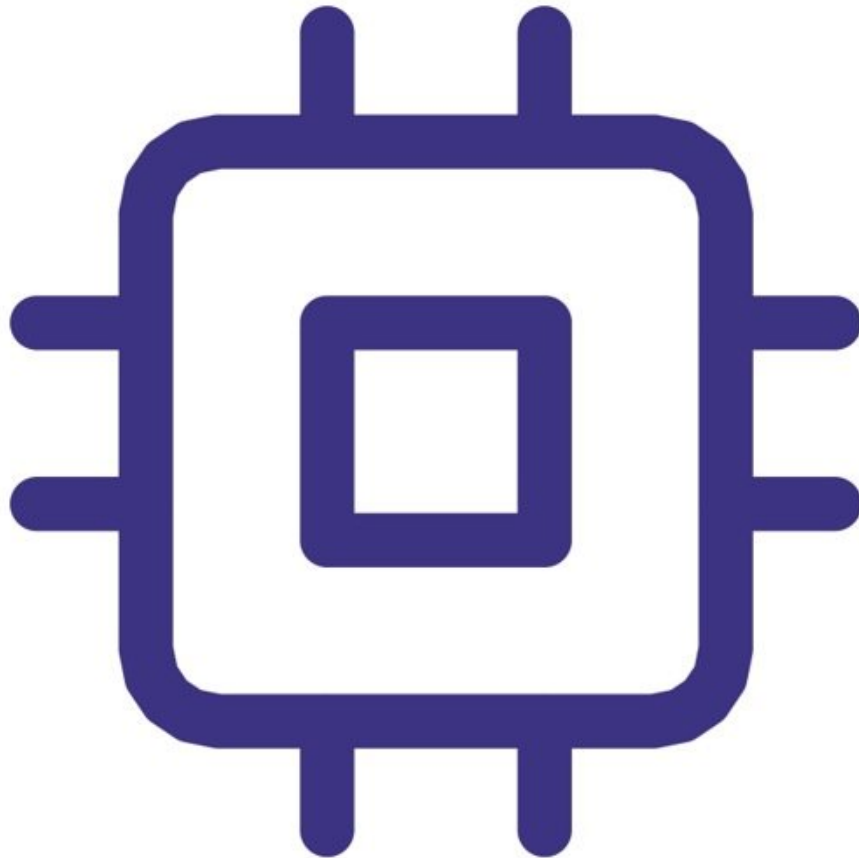




Replace sensor board - DISCONTINUED

Written By: Tanya Taylor



INTRODUCTION

The SM70 is a low-maintenance monitor with no user-serviceable components.

It comes with one of three ozone sensors:

- Ozone 0-0.15ppm
- Ozone 0-0.5ppm
- Ozone 0-10ppm

As the ozone sensor in the SM70 can't be calibrated, you need to replace the entire sensor board once a year, or sooner if you suspect it isn't working properly. Replacement sensor boards come with a factory calibration certificate.

Note: You can test the operation of the sensor using a bump test. This typically involves brief exposure of the sensor to a known quantity of gas and making sure the monitor reading corresponds with that concentration. Unlike calibration, there's no adjustment of the monitor in response to the level of gas detected.



TOOLS:

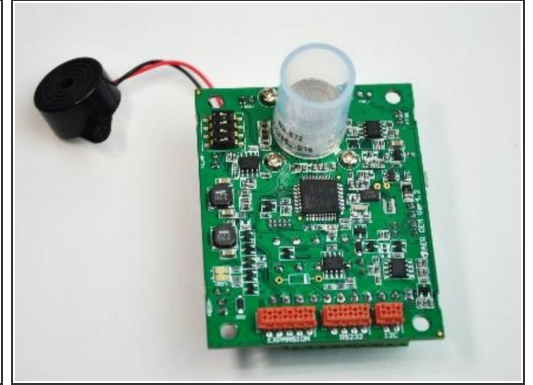
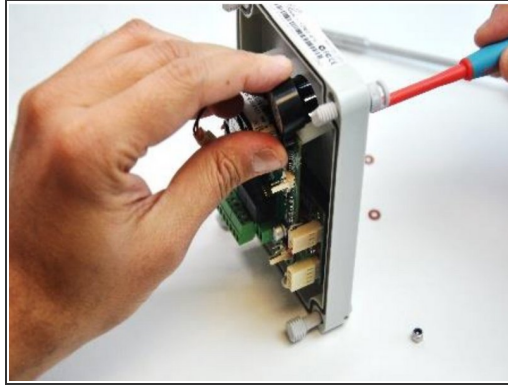
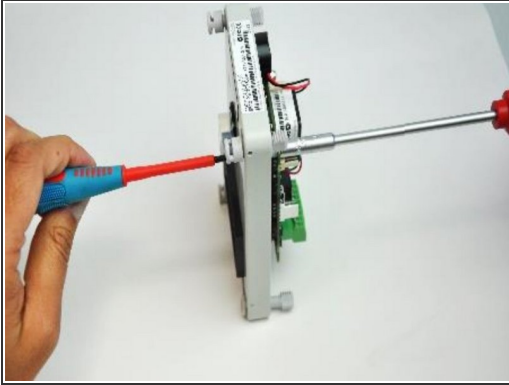
- [Small flat head screwdriver](#) (1)
- [Hexa-socket screwdriver](#) (1)



PARTS:

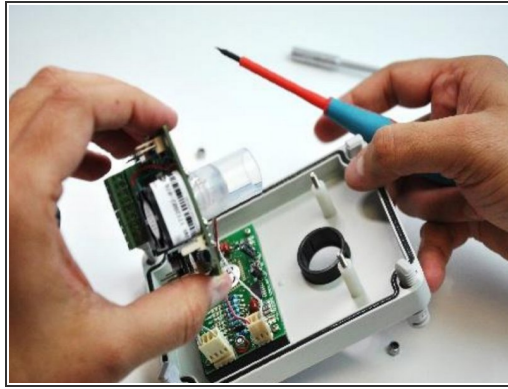
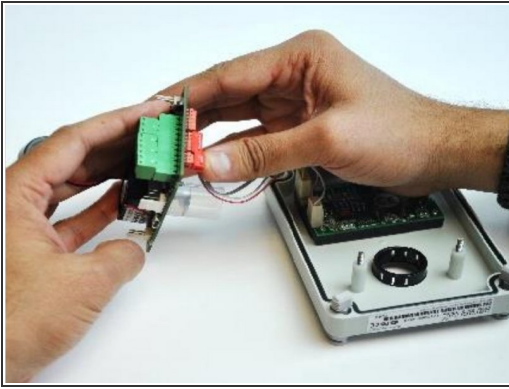
- [SM70 sensor board 0-0.15ppm](#) (1)
- [SM70 sensor board 0-0.5ppm](#) (1)
- [SM70 sensor board 0-10ppm](#) (1)


Step 1 — Remove old sensor board



- Remove the lid from the SM70 by unscrewing the 4 lid screws.
- Unscrew the sensor board from the back of the lid using a 5.5mm hexa-socket screwdriver. Use a flat head screwdriver to hold the 2 screws in place as you unscrew.
- Keep the screws, nuts, washers and standoffs for re-use.
- Remove cabling.

Step 2 — Attach new sensor board



- Connect cabling to the new sensor board.
 - Place the sensor board into the lid enclosure, ensuring the screws slide through both holes so the board is resting on the plastic standoffs underneath.
 - Make sure the sensor board doesn't rest on the connectors.
 - Use a flat head screwdriver to hold the screws in place while tightening.
-  Remember to replace the brown washers.

For further support, contact [Technical Support](#).