



Replace internal blower

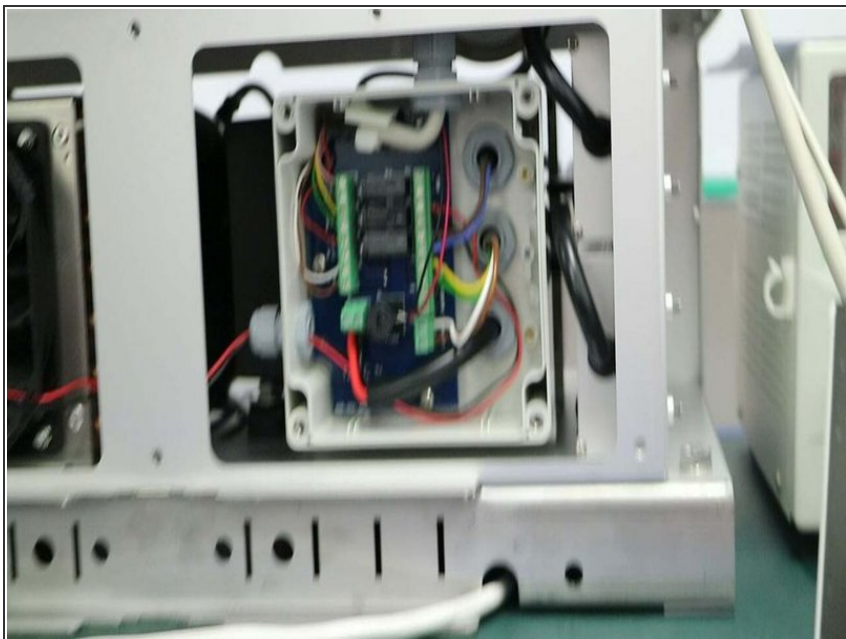
Written By: Tanya Taylor



 **TOOLS:**

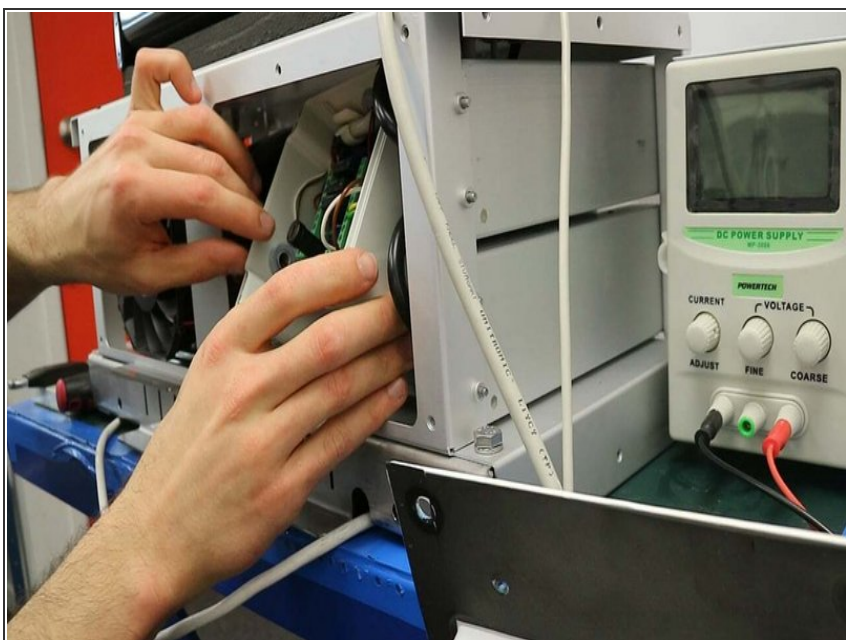
- [Small flat head screwdriver](#) (1)
 - [Large Phillips head screwdriver](#) (1)
 - [Adjustable spanner](#) (1)
 - [Pliers](#) (1)
 - [Tape](#) (1)
-

Step 1 — Remove old blower



- Follow the steps in this video to remove a faulty blower from your TMS cassette.

Step 2 — Insert new blower



- Follow the steps in this video to insert a new blower.

For further support, contact [Technical Support](#).