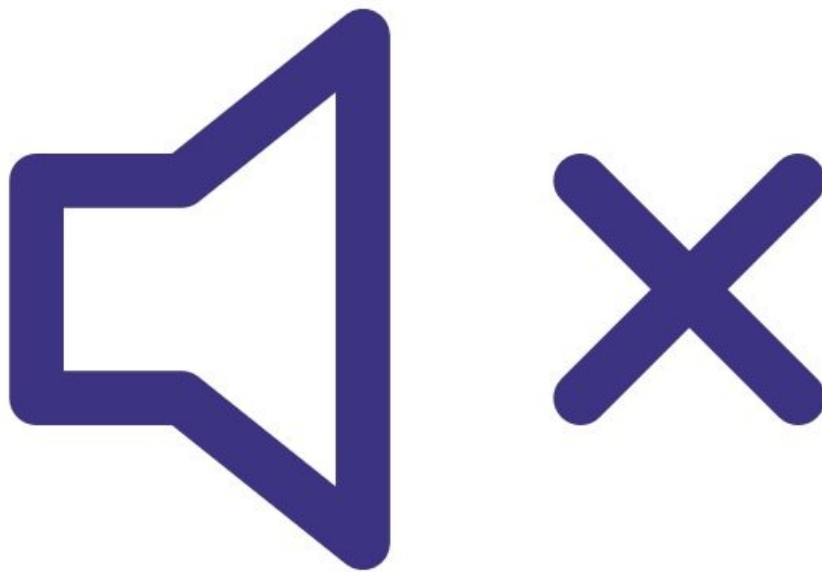




# Mute feedback beeps

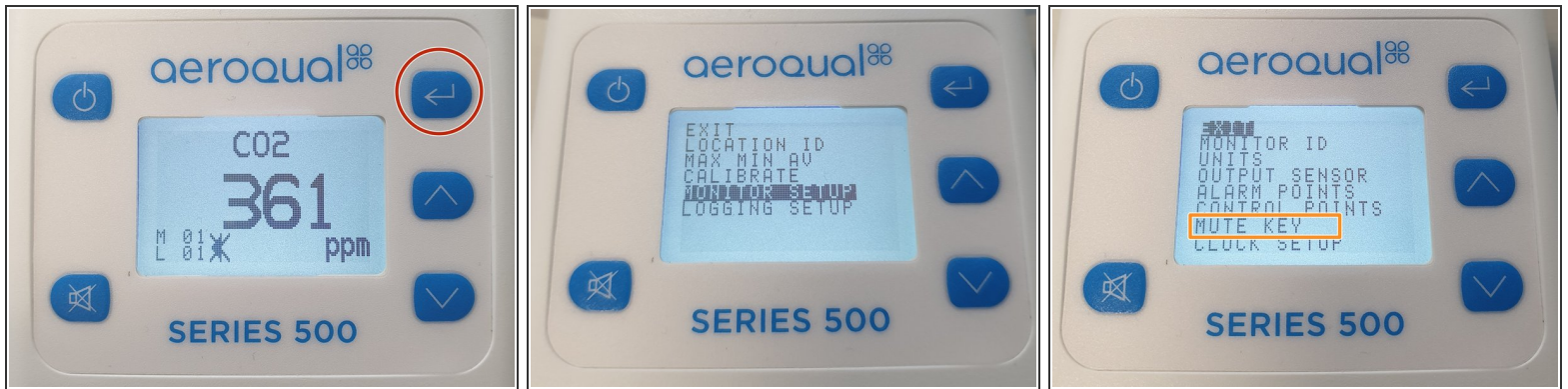
Written By: StJohn Vuetilovoni



## INTRODUCTION

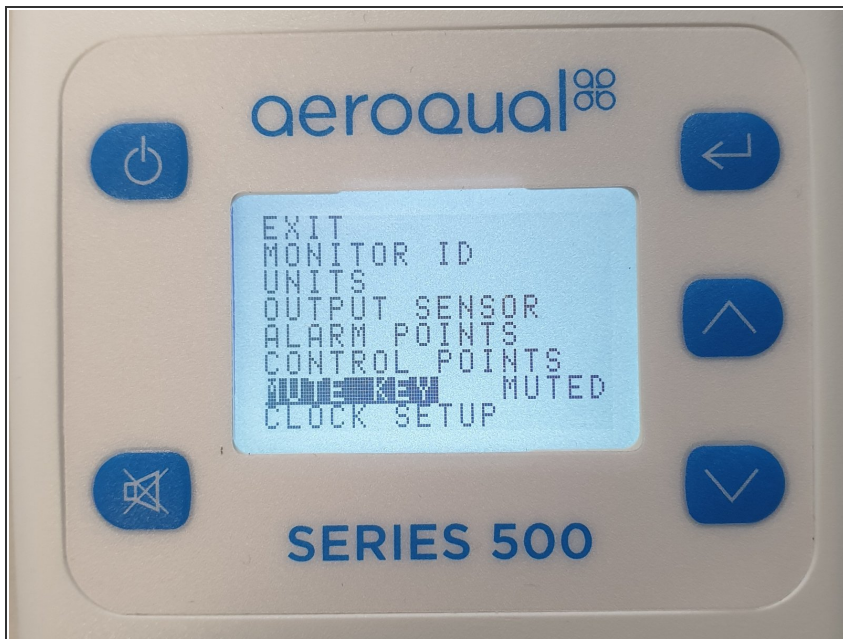
Using the mute key option silences the audible feedback beeps that occur when you press a button.

## Step 1 — Select mute key



- If you have a Series 500 or 300 monitor:
  - Press the **ENTER** button and select **MONITOR SETUP** from the main menu.
  - Select **MUTE KEY** from the secondary menu.
- If you have a Series 200, press the **ENTER** button and select **MUTE KEY** from the main menu.

## Step 2 — Confirm mute



- Press **ENTER** to confirm the selection.
- The word **MUTED** appears next to **MUTE KEY**.
- ❗ On the Series 200, the mute setting returns to its default state when you turn the monitor off. When you restart, you'll need to activate the muted option again.

For further support, contact [Technical Support](#).