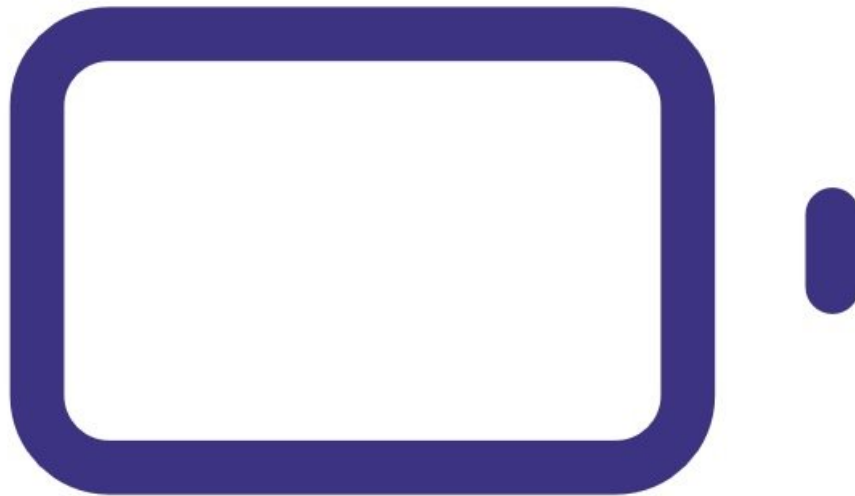




Connect battery

Written By: StJohn Vuetilovoni

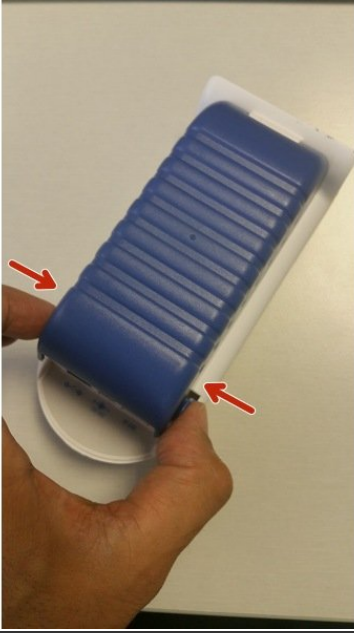


INTRODUCTION

Aeroqual handheld monitors are shipped with a lithium (Li) battery installed but disconnected (unplugged).

Note: Older models may have a nickel metal hydride (NiMH) battery. Batteries are not cross-compatible (you can't use a lithium battery in a monitor that currently has a nickel battery). The easiest way to tell is by the color of the battery back. Lithium batteries are blue and nickel batteries are green.

Step 1 — Remove cover



- Push the cover locking tabs inwards on both sides.
- With both tabs pushed in, pull the cover upwards.
- ⓘ If it's difficult to remove the cover you may be squeezing it too tight. Try to wiggle it as you lift up.

Step 2 — Remove battery



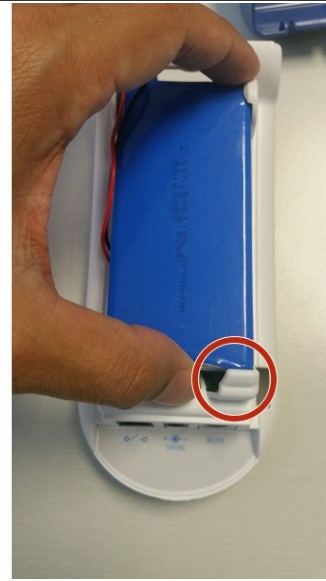
- Remove the battery by pushing the base of the battery forward so it clears the clips at the bottom.

Step 3 — Insert connector



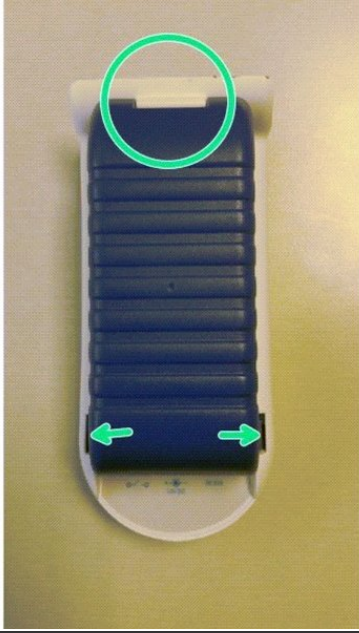
- Insert the connector into the socket at the base of the monitor. Take care to orientate the plug and align the pins and press firmly into place.
- Gently tug the wires to ensure the connection is secure and the plug doesn't come away easily.

Step 4 — Reinsert battery



- Orientate the battery so the wires run towards the top of the monitor where the sensor head plugs in.
- Push the top of the battery down so it's secured under the two top clips.
- Push the battery firmly from the bottom and position the bottom of the battery under the bottom clips.

Step 5 — Replace cover



- Re-engage the top hinge of the cover, swing it down and shut it into place.
- Ensure the tabs are keeping the cover in place. If the cover is coming off, push it back down and gently pull the tabs outwards - you should feel the tabs lock under the sides of the case.

Step 6 — Check connection



- If your monitor unexpectedly stops working, the battery may have become disconnected from the

socket at the base of the monitor. In this situation, check the connection.

For further support, contact [Technical Support](#).