



# Search for monitor in Cloud

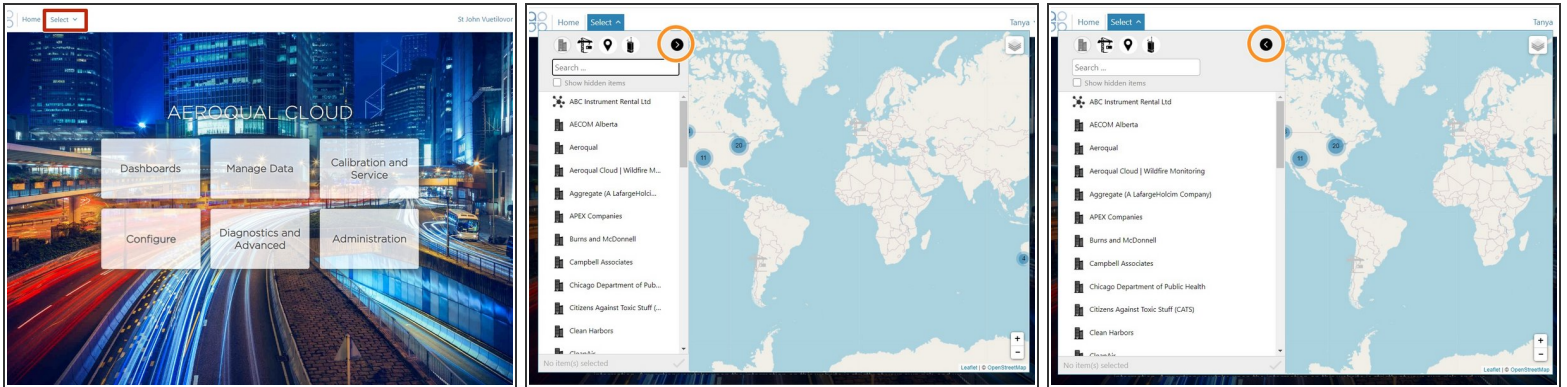
Written By: Tanya Taylor



## INTRODUCTION

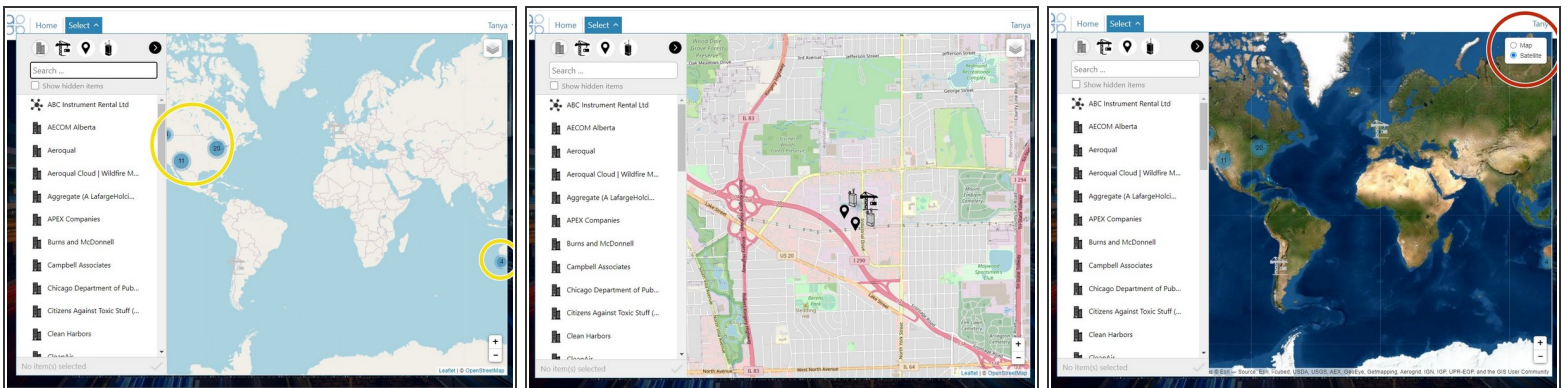
Once you're connected to Aeroqual Cloud, use this guide to find your monitor in the search panel.

## Step 1 — Display search panel



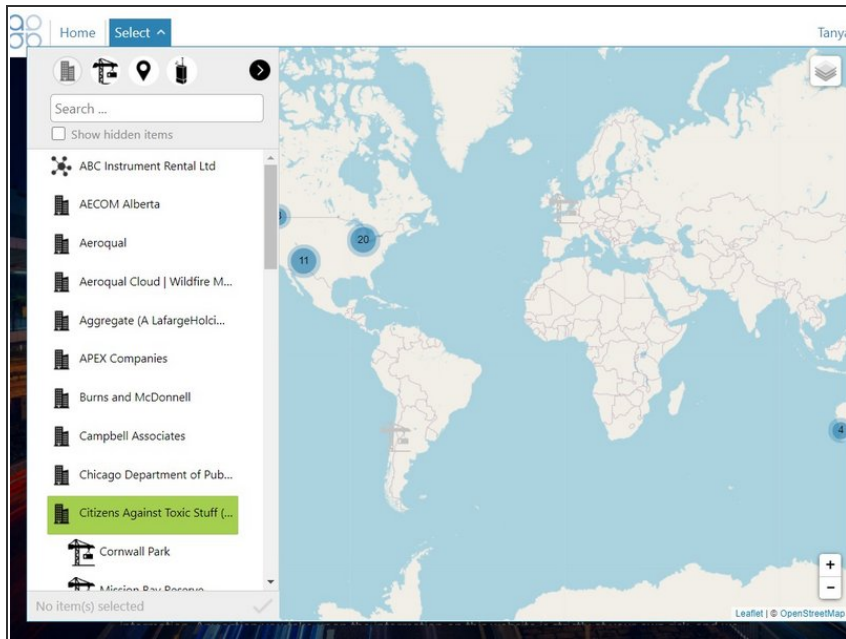
- To display the search panel, click **Search** on the Aeroqual Cloud home screen.
- To expand and collapse the width of the panel, click the arrow in the toolbar.

## Step 2 — Interpret map



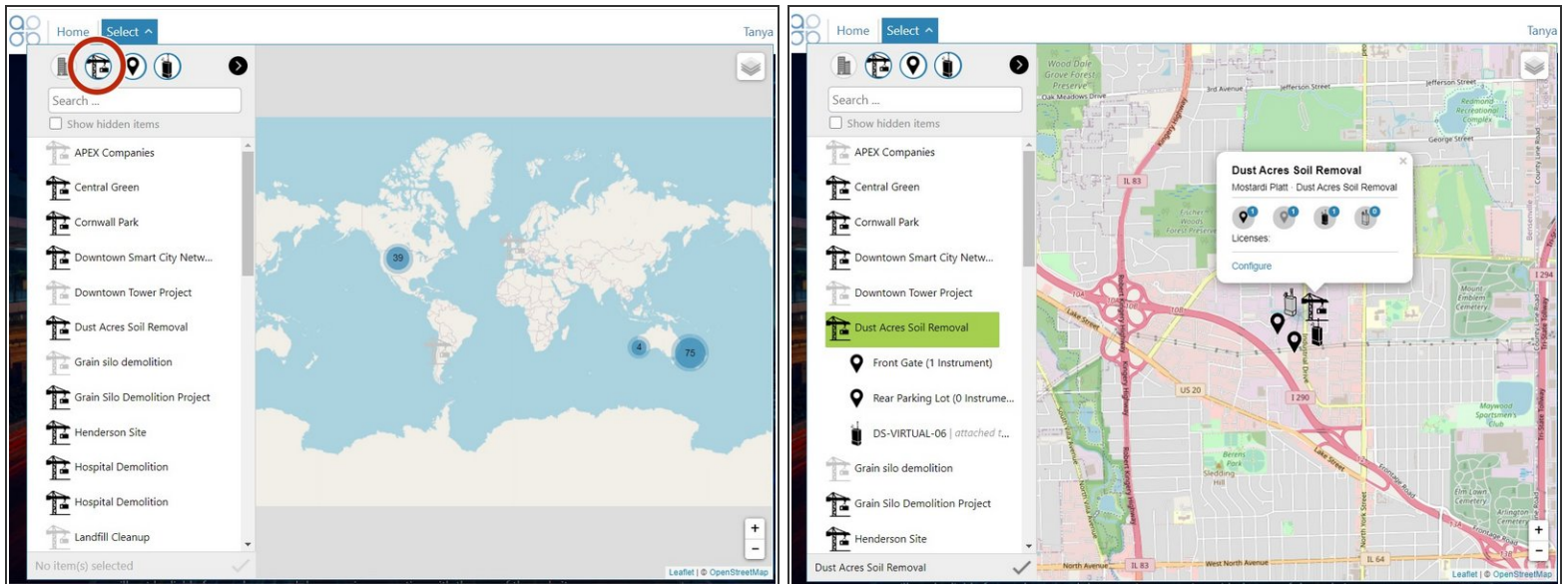
- Each number on the map represents the total number of Aeroqual Cloud entities (projects, monitoring locations and monitors) in a particular location.
- Use your mouse to move around the map scroll (zoom) in and out. Alternatively, use the plus and minus icons on the bottom right of the map.
- To switch between a satellite view of the globe, click the icon on the top right of the screen.

## Step 3 — Search by organization



- The default view in the search results panel is to display all entities in Aeroqual Cloud alphabetically by organisation.
- Click any organisation to view its associated projects, monitoring locations and monitors.

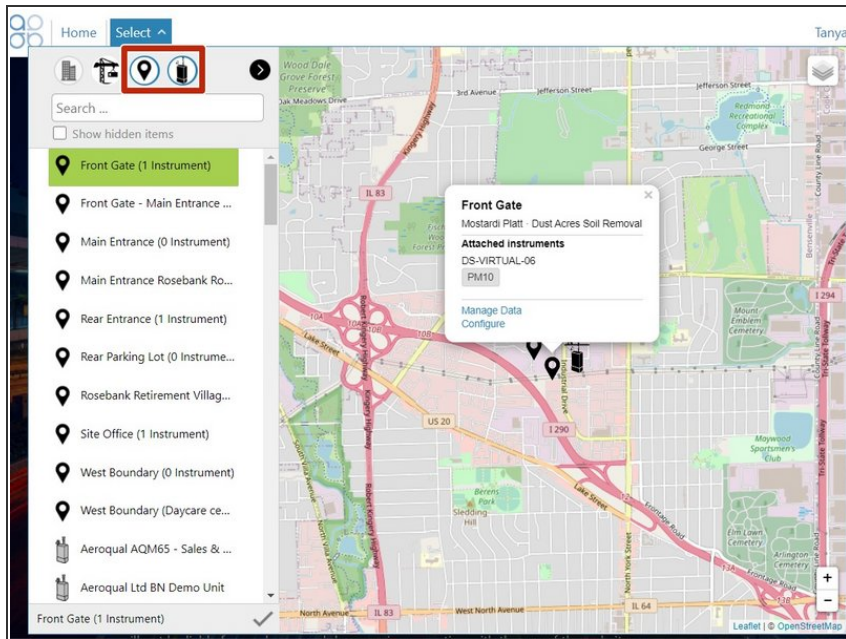
## Step 4 — Search by project



- To search by project, click the project icon in the toolbar. The project, monitoring location and monitor icons must have blue outlines.
- Click any project to view its associated monitoring locations and monitors.
- The map view automatically changes to show the project location and an information popup communicates the following details:
  - The number of monitoring locations with an attached monitor
  - The number of monitoring locations without an attached monitor
  - The number of monitors in the project that are currently online
  - The number of monitors in the project that are currently offline
  - Links to Aeroqual Cloud apps available to the project.

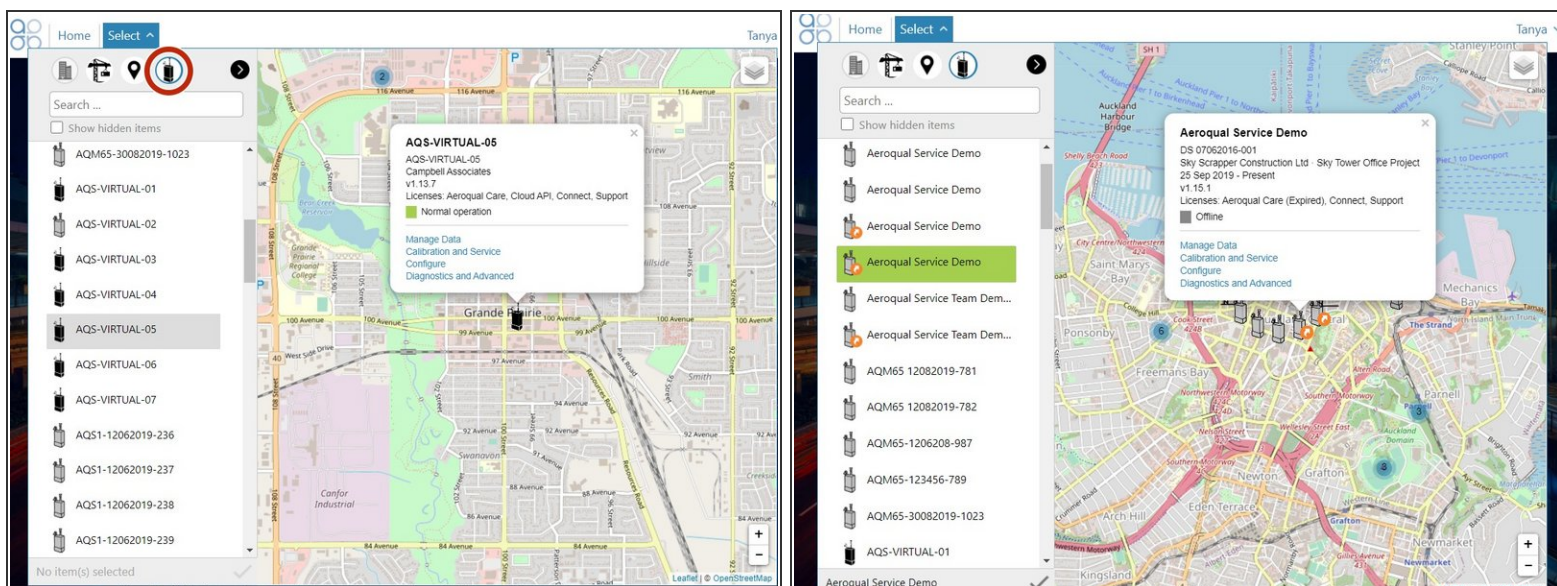


## Step 5 — Search by monitoring location



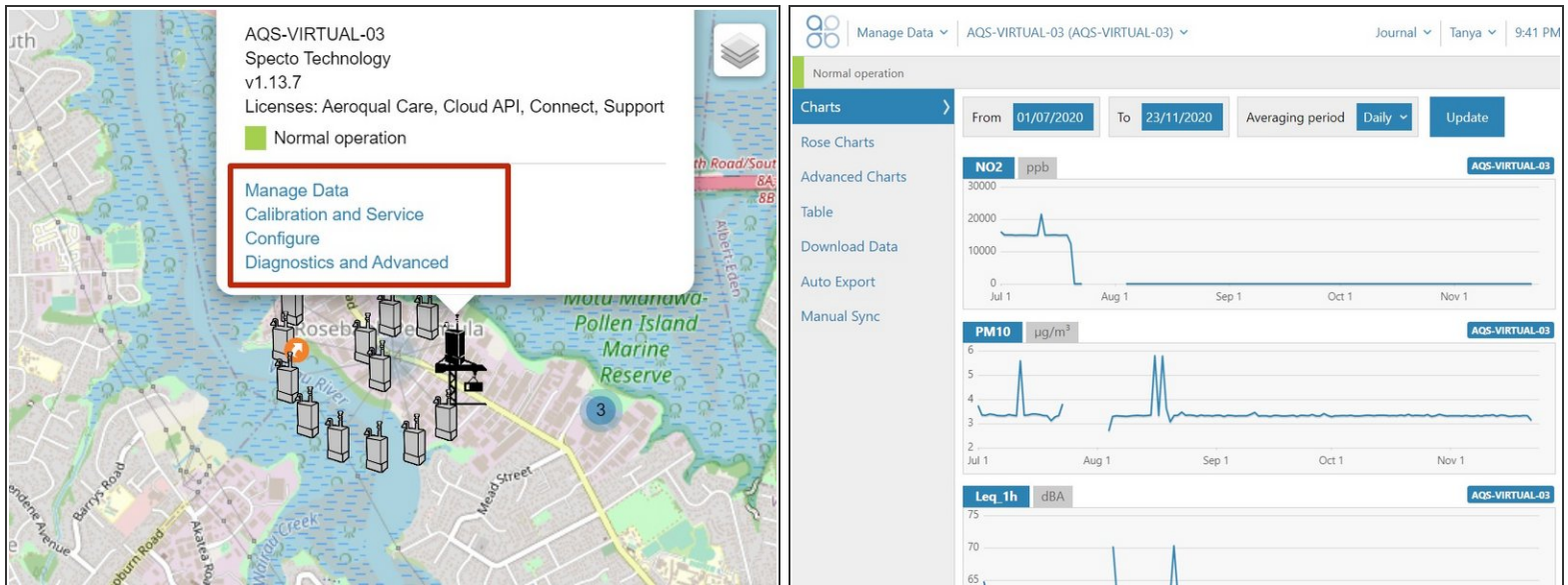
- To search by monitoring location, deselect the project icon. Only the monitoring location and monitor icons must have blue outlines.
- Click any monitoring location to view its associated monitor.
- The map view automatically changes to show the monitoring location and an information popup communicates the following details:
  - The name of any attached monitor
  - The parameters that monitor is measuring
  - Links to Aeroqual Cloud apps available to the monitoring location.

## Step 6 — Search by monitor



- To search by monitor, deselect the monitoring location icon. Only the monitor icon must have a blue outline.
- Monitors display alphabetically, regardless of whether they are offline (grey) or online (black). Leased monitors have an orange arrow.
- Click a monitor to view a popup that communicates the following details:
  - The company account the monitor is associated with.
  - The software version of the hardware ePC.
  - The licenses the monitor is using.
  - The operational status of the monitor (**Offline** or **Normal operation**).
  - Links to Aeroqual Cloud apps available to the monitor.

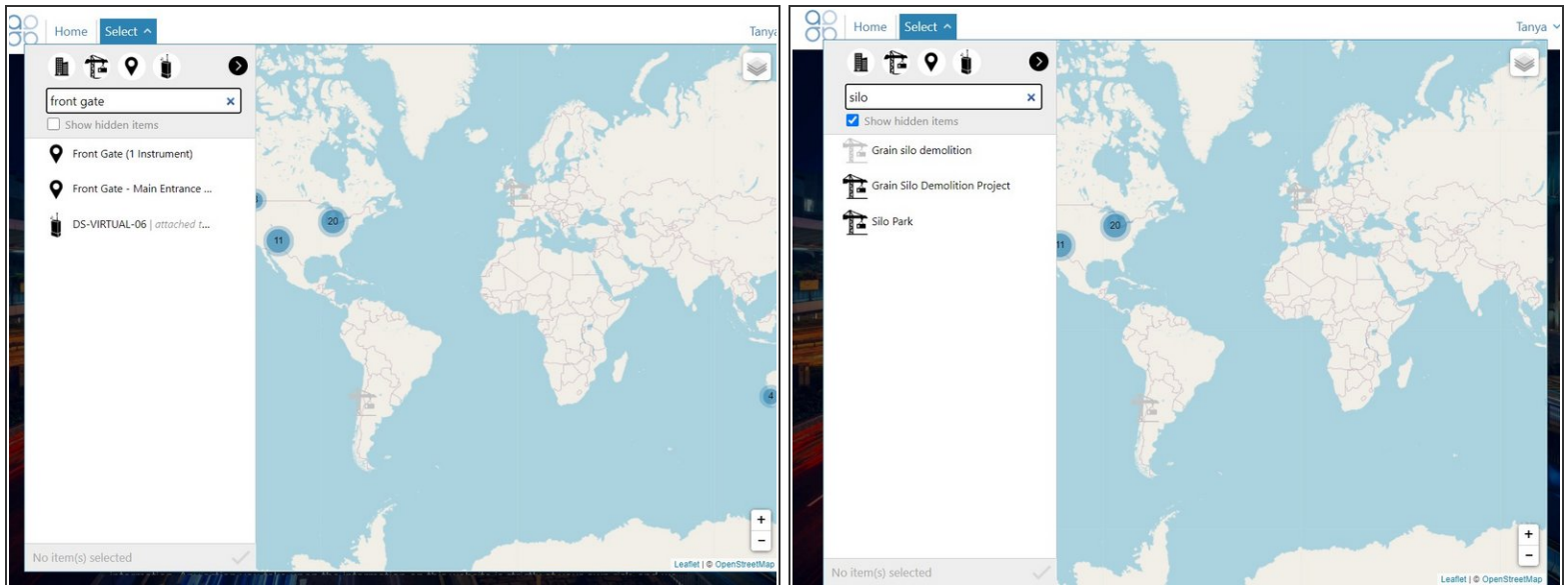
## Step 7 — Enter app



- To enter an app that's available for a particular monitoring location or monitor, simply click the app name in the information popup.
- Once you're in the app, complete your task like you ordinarily would.



## Step 8 — Search by name



- To find any entity in Aeroqual Cloud using the **Search** field, start typing in any part of its name.
- To include items that've been hidden, select **Show hidden items**.
- ❗ The search is not case sensitive.

For further support, contact [Technical Support](#).