



Connect calibrator to computer

Written By: Tanya Taylor



INTRODUCTION

This user guide assumes you have already [installed the AirCal 1000's computer software](#).

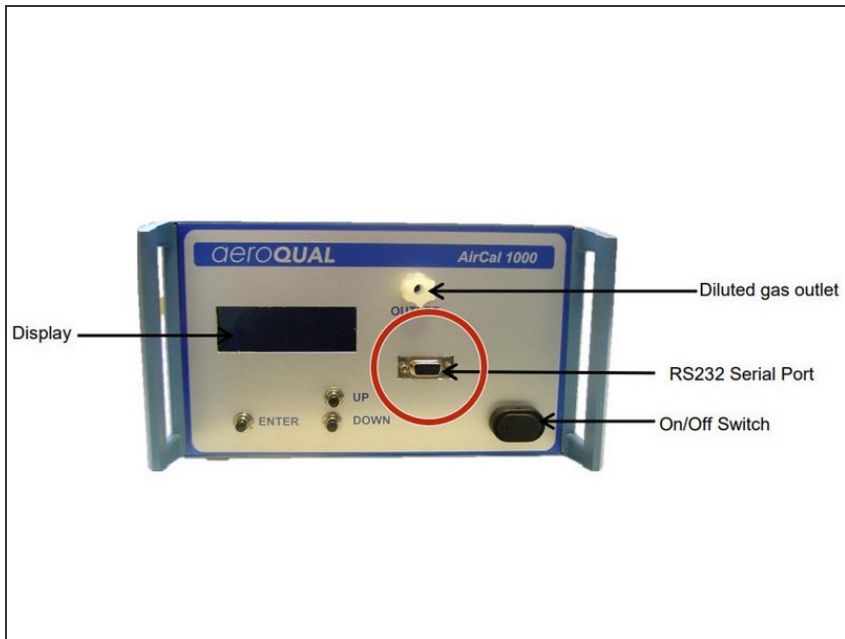
Note: You need to supply your own RS232 serial port to USB converter.



PARTS:

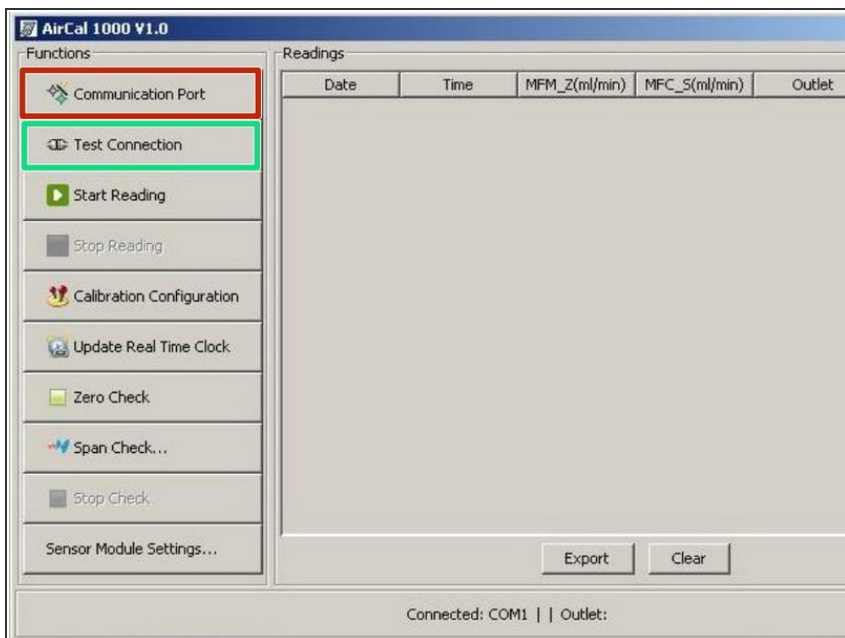
- [USB to RS232 converter](#) (1)
-

Step 1 — Connect to computer



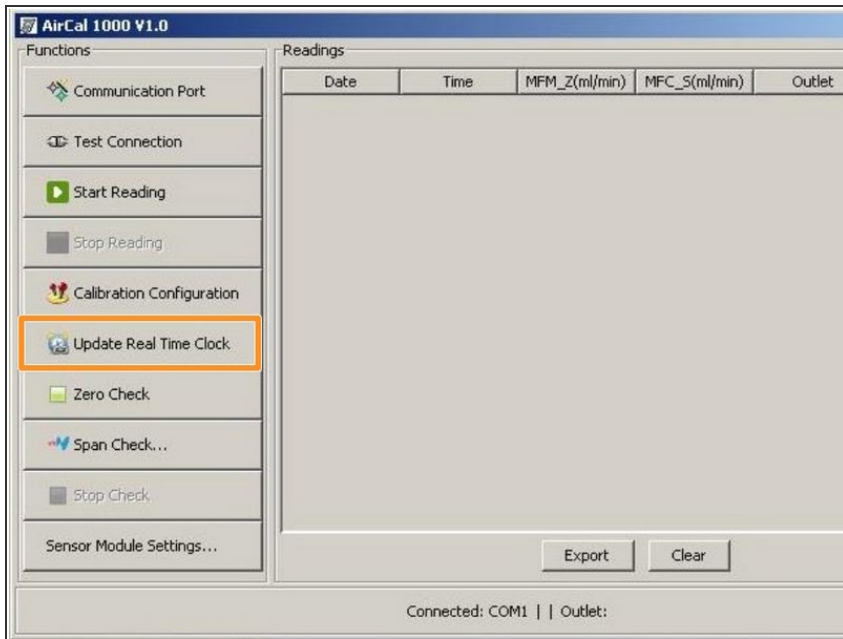
- Connect a USB to RS232 converter between the RS232 serial port on your AirCal 1000 and the USB port on your computer.
- ❗ You may need to install the converter drivers.

Step 2 — Test connection



- Launch the AirCal 1000 computer software.
- Select the **Communication Port** option in the **Functions** panel.
- Choose the correct com port on your computer.
- ❗ This will be created when the serial port convertor is plugged in. You may need to install the convertor drivers.
- Select **Test Connection** to check the AirCal 1000 is successfully connected.

Step 3 — Synchronize clock



i This step only needs to be done the first time the instrument is set up.

- Select **Update Real Time Clock** to synchronize the AirCal 1000 clock with the computer date/time.
- Once the connection is created and the date/time is updated, the software is ready to use.

For further support, contact [Technical Support](#).