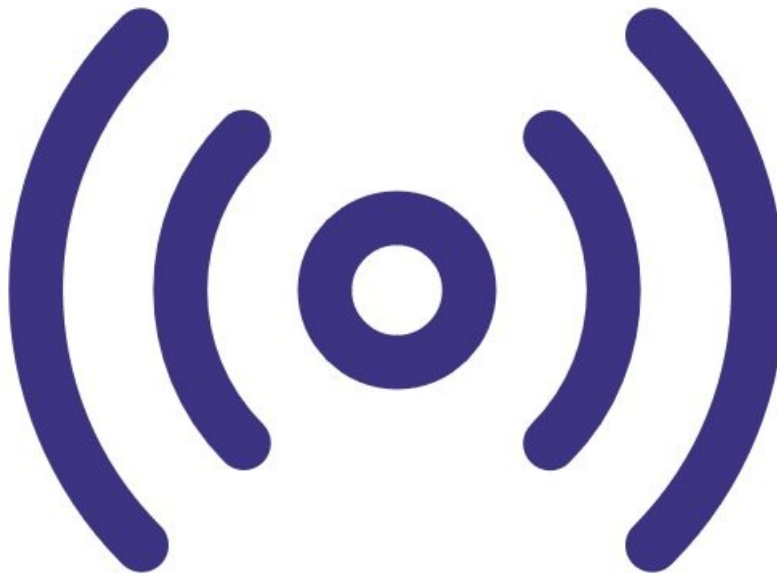




# Install a SIM card in the AQY R

This guide shows how to install a SIM card in the modem in the AQY R.

Written By: StJohn Vuetilovoni

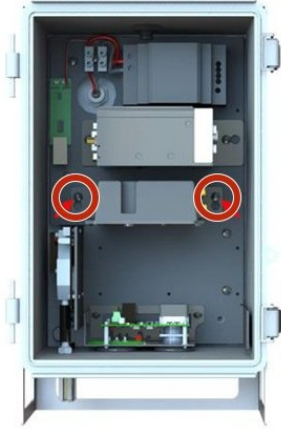




## TOOLS:

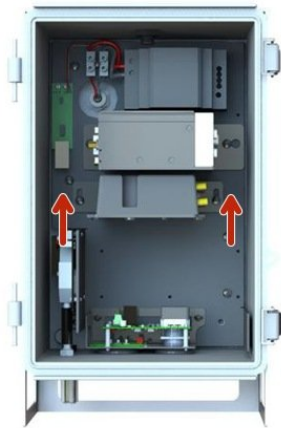
- [Large Phillips head screwdriver](#) (1)
  - [Small Phillips head screwdriver](#) (1)
-

## Step 1 — Access modem for removal



- Power down the instrument and open the front cover
- Loosen 2x M4 screws retaining the modem mounting bracket. Note that these only need to be loosened and not removed completely.

## Step 2 — Remove modem



- Slide the modem and bracket up and out of the keyhole slots.

### Step 3 — Access the SIM card slots



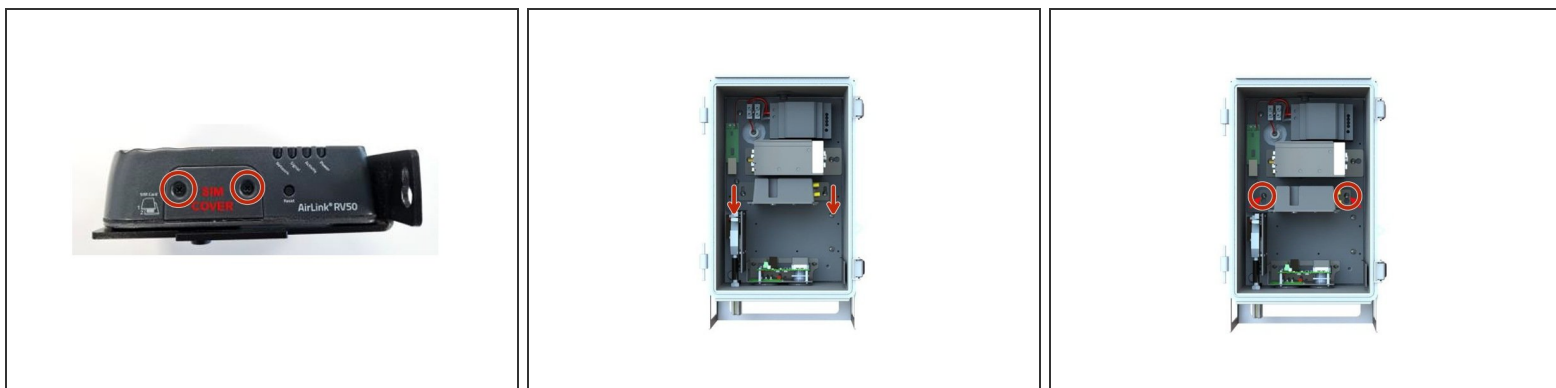
- The SIM card slot is accessible on the left side of the device. Remove 2x screws and remove cover to expose the SIM card slots.

### Step 4 — Install SIM card



- The top slot is for the primary SIM card.
- The bottom slot is for an optional secondary SIM card.
- ① **If only one SIM card is to be used it should be installed in the top slot.**

## Step 5 — Re-assemble and re-install modem



- Once the SIM card has been inserted, reinstall the cover, re-securing the two screws.
- Reinstall the modem and bracket by inserting the M4 screws into the keyhole slots on the bracket and sliding down.
- Tighten the M4 screws.

## Step 6 — Antenna Connections



- If the antenna has been disconnected then re-connect as follows:
  - Connect '**LTE MAIN**' to the '**Cellular**' SMA connector
  - Connect the '**LTE AUX**' to the '**Diversity**' SMA connector
  - Connect the '**GPS**' connector to the '**GPS**' SMA connector

For further support, contact Technical Support.