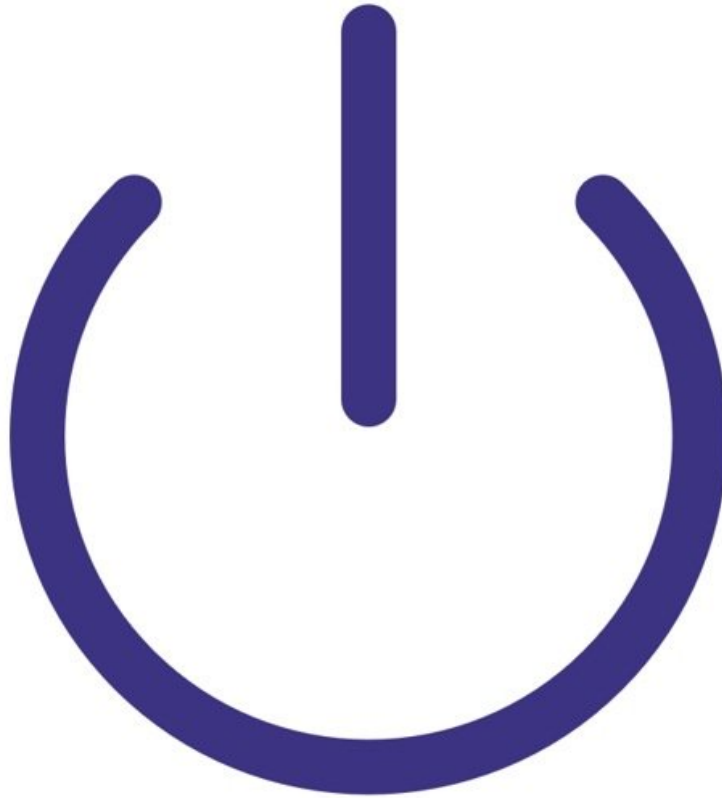




Powering on and off

How to power the Ranger on and off.

Written By: StJohn Vuetilovoni

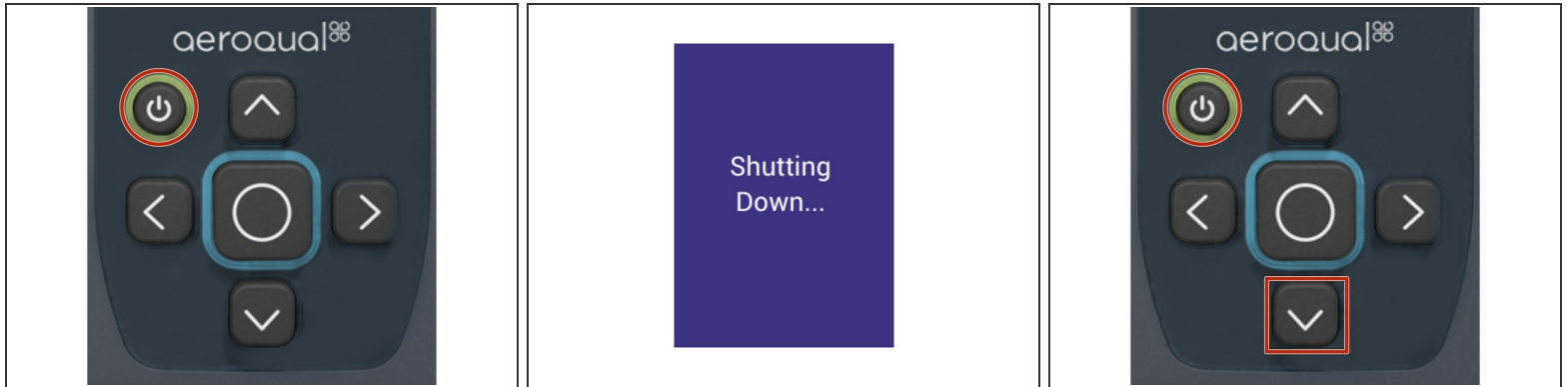


Step 1 — Powering on Ranger



- Press the **POWER** button to power on the instrument.
- An LED will illuminate on the front of the display.
- Please wait 15 seconds for the start-up sequence to complete.
- From the splash screen, press **ANY BUTTON** to proceed.

Step 2 — Powering off Ranger



- Press and hold the **POWER** button for five (5) seconds.
 - Please wait for the shut-down screen to appear.
 - The instrument will now power off.
- i** In the event the instrument experiences an irrecoverable failure, a hard reset can be performed by holding the **POWER BUTTON** and **DOWN ARROW** simultaneously for 20 seconds.

For further support, contact Aeroqual Support.