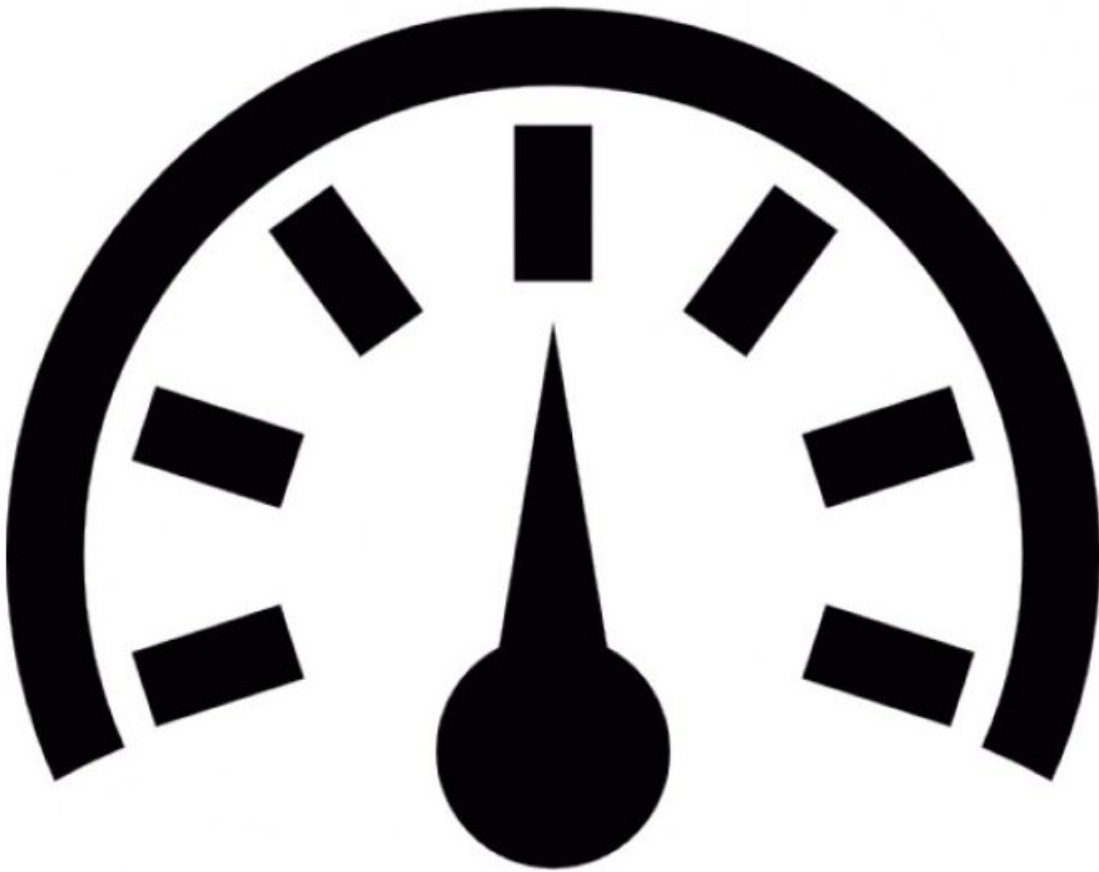




# Show minimum, maximum and average

Written By: StJohn Vuetilovoni

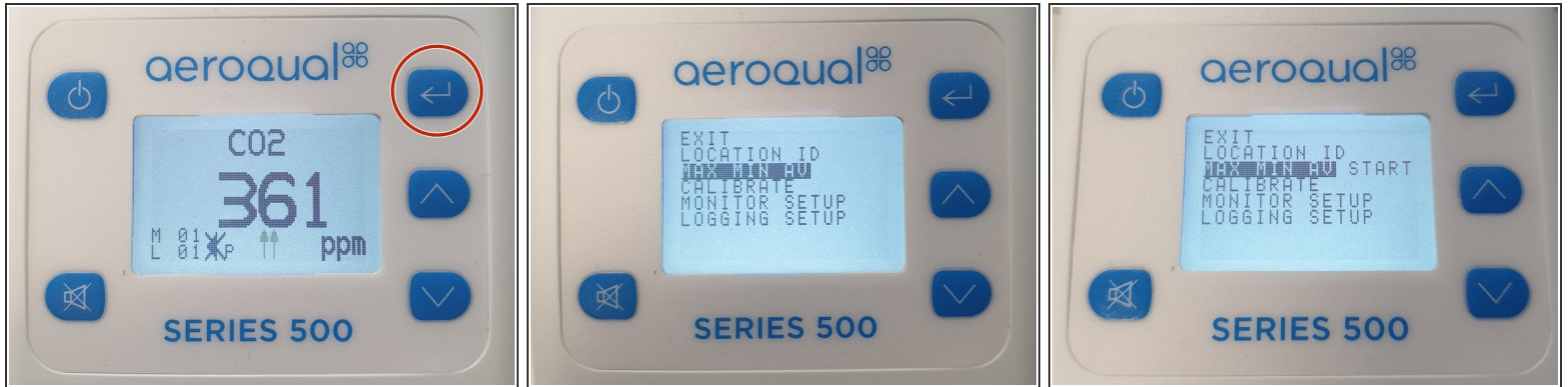


## INTRODUCTION

When you activate the **MIN MAX AV** option, the display shows the minimum, maximum and average readings values for your installed sensors.

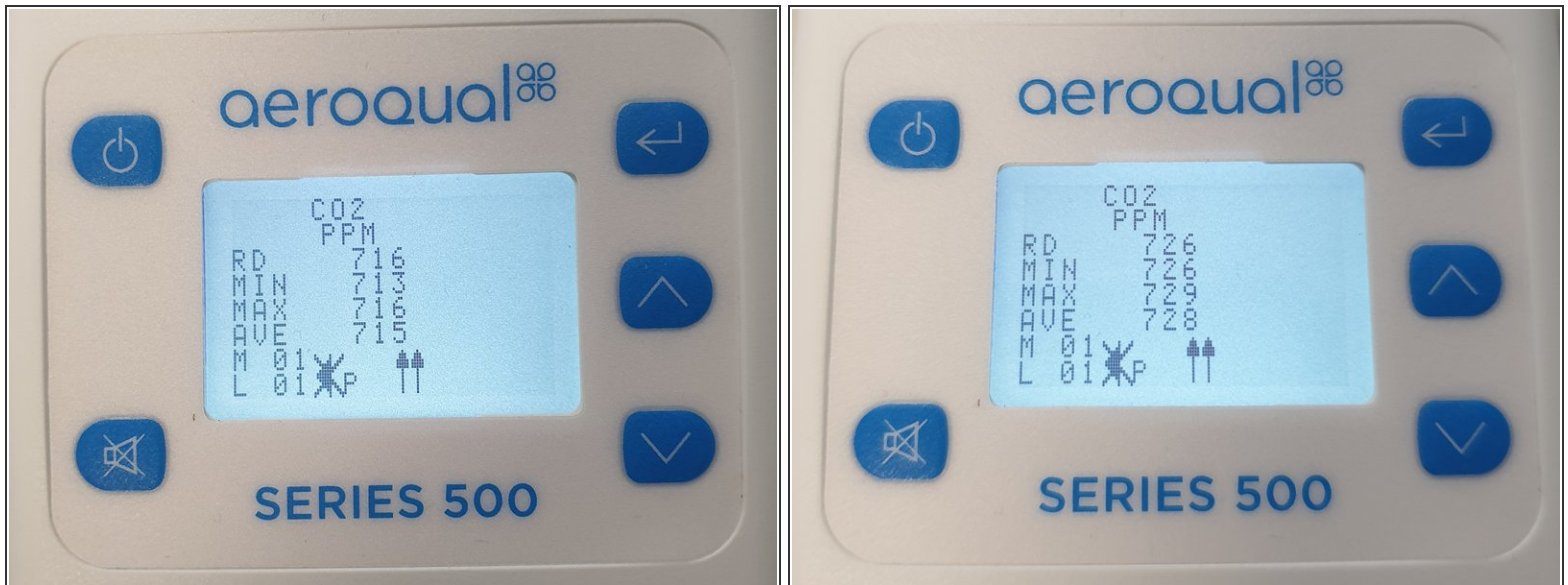
**Note:** The min, max and average values are displayed but they aren't logged. The general expectation with averaging is that you log data every minute, export the data to MS Excel file and then calculate averages from the raw data.

## Step 1 — Start display option



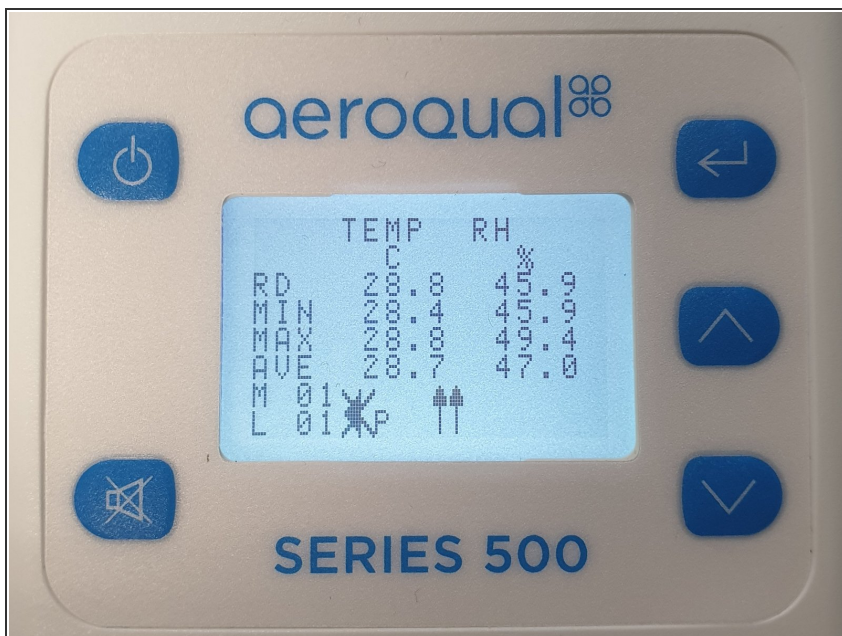
- Press the **ENTER** button and select **MIN MAX AV** from the main menu. This displays the **START** option.
- Select **START** using the **UP/DOWN** buttons and press **ENTER** to confirm. This starts the measurement cycle.
- Use the **UP/DOWN** buttons to select **EXIT** and return to the readings screen.
- ❗ If you have a Series 500 or 300 monitor, **MIN MAX AV** can also be started by pressing the **DOWN** button for 2 seconds.

## Step 2 — View sensor readings



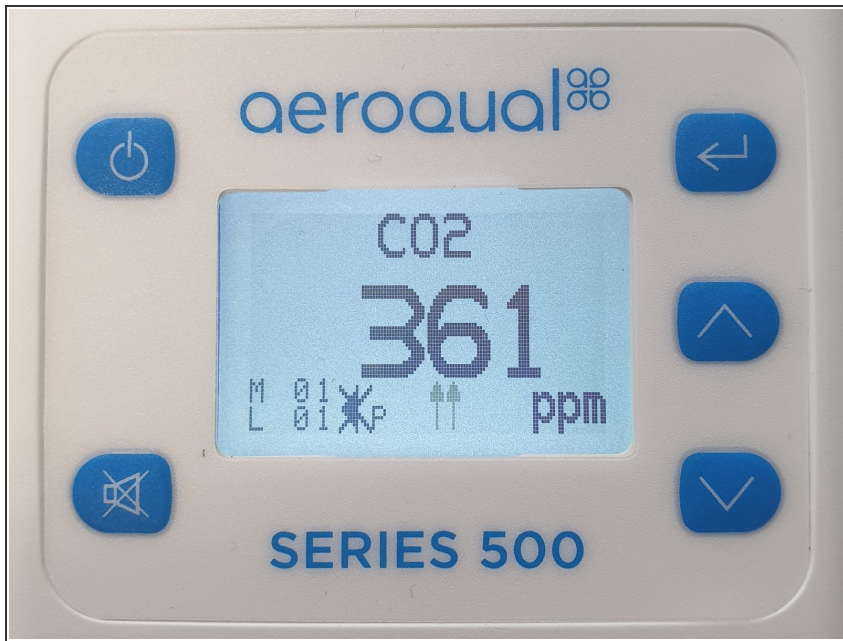
- The readings screen now shows the minimum, maximum and average readings for the measurement cycle. **RD** is the current reading.
- The display scrolls every time a new set of readings is taken.

## Step 3 — Other sensor readings



- If a temperature / relative humidity sensor is fitted, its values alternate on screen with the measurement values from the sensor head.

## Step 4 — Stop readings



- Press the **ENTER** button and select **MIN MAX AV** from the main menu. This displays the **STOP** option.
  - Select **STOP** using the **UP/DOWN** buttons and press **ENTER** to confirm.
  - Use the **UP/DOWN** buttons to select **EXIT** and return to the default display screen.
- ❗ If you have a Series 500 or 300 monitor, **MIN MAX AV** can also be stopped by pressing the **DOWN** button for 2 seconds.

For further support, contact [Technical Support](#).