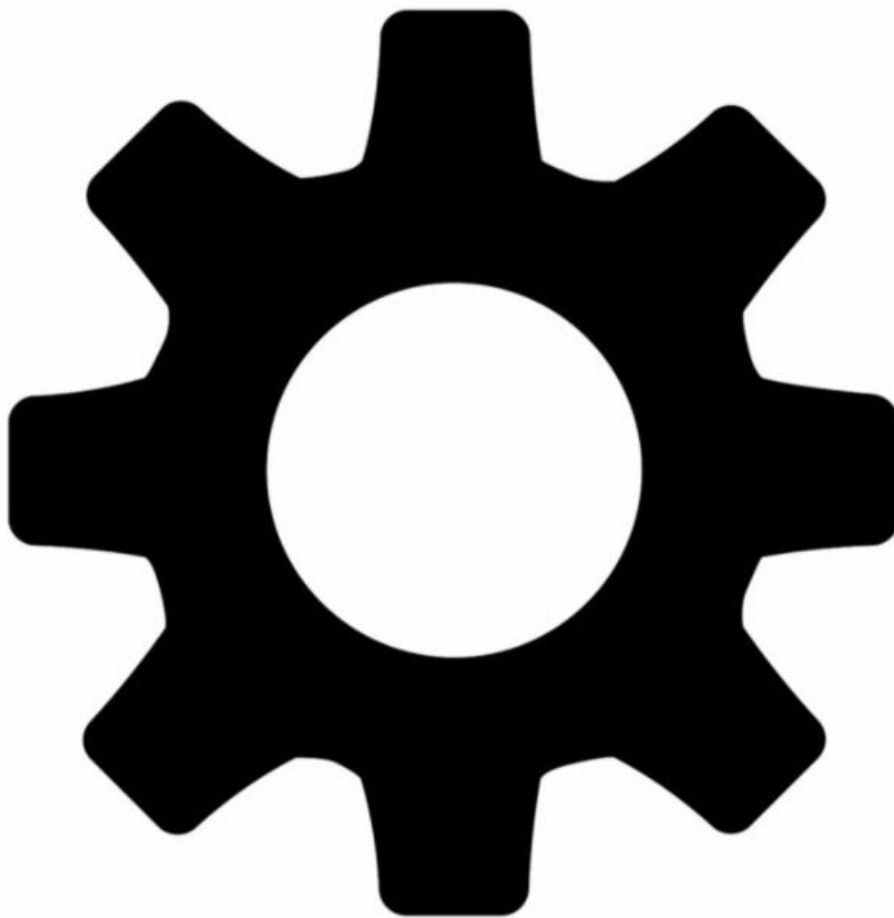




Configure monitor

Written By: StJohn Vuetilovoni

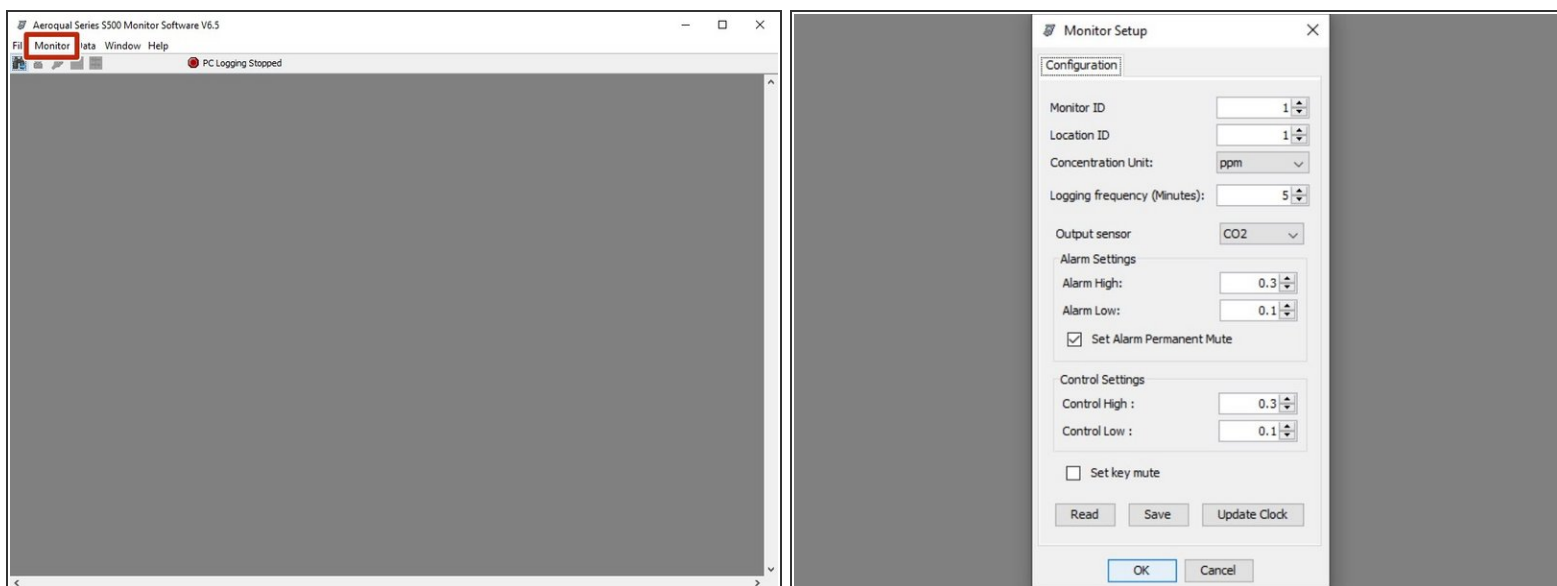


INTRODUCTION

Use this guide to change the monitor ID, location ID, concentration unit, logging frequency, output sensor, alarm settings, control settings, and date and time.

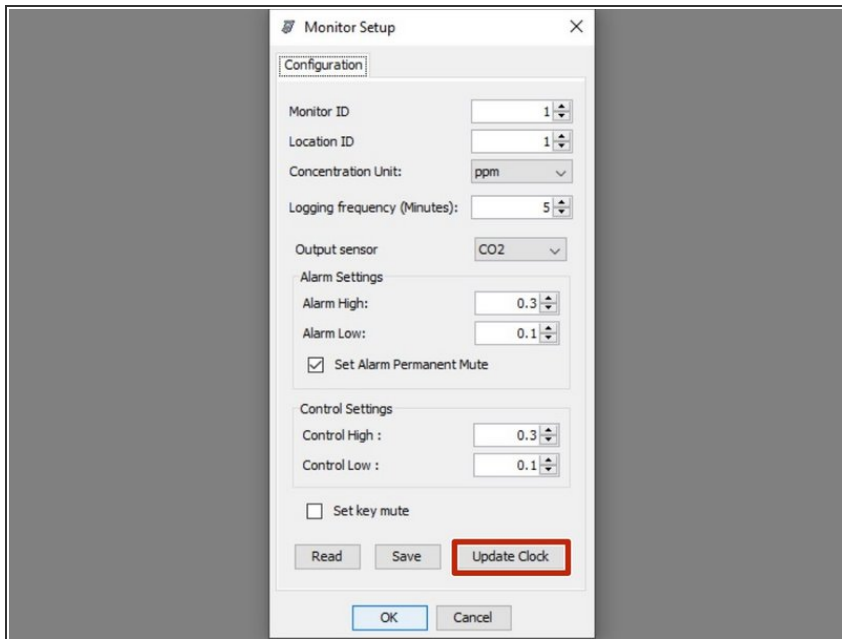
Note: It assumes you have already [installed the monitor's configuration software](#), [downloaded the cable driver](#) and [connected your monitor to a PC](#).

Step 1 — Update monitor settings



- [Launch the Aeroqual S500 software](#) and click **Monitor > Setup** from the menu bar. The **Monitor Setup** dialog box appears.
- Type in, or use the up/down buttons to set desired values for monitor ID, location ID, concentration unit, logging frequency, output sensor, alarm settings, and control settings.
- If the temperature and relative humidity sensor is connected, an option to select the temperature unit also appears.
- ❗ Each function has a keyboard shortcut. The shortcut keys are noted alongside each function in the drop-down menus.

Step 2 — Set date and time



- To log data, it's essential the clock on the monitor is set to the true time. Click **Update Clock** to set the date and time. Note: This can also be done [on the monitor via its setup menu](#).
- Click **Save** to synchronize the monitor values with those from the PC.
- If the clock doesn't synchronize, the monitor clock battery may be flat and need replacement. In this situation, contact [Technical Support](#).

For further support, contact [Technical Support](#).