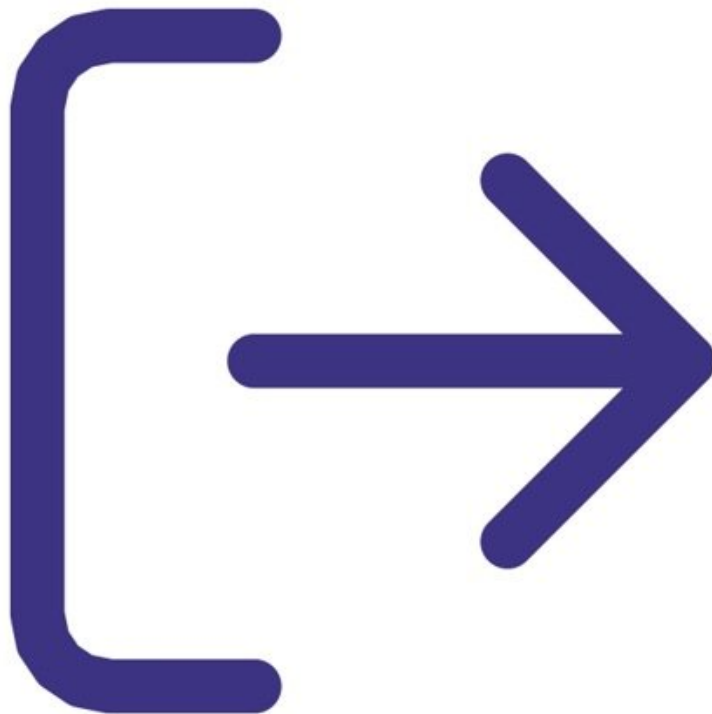




Select output sensor

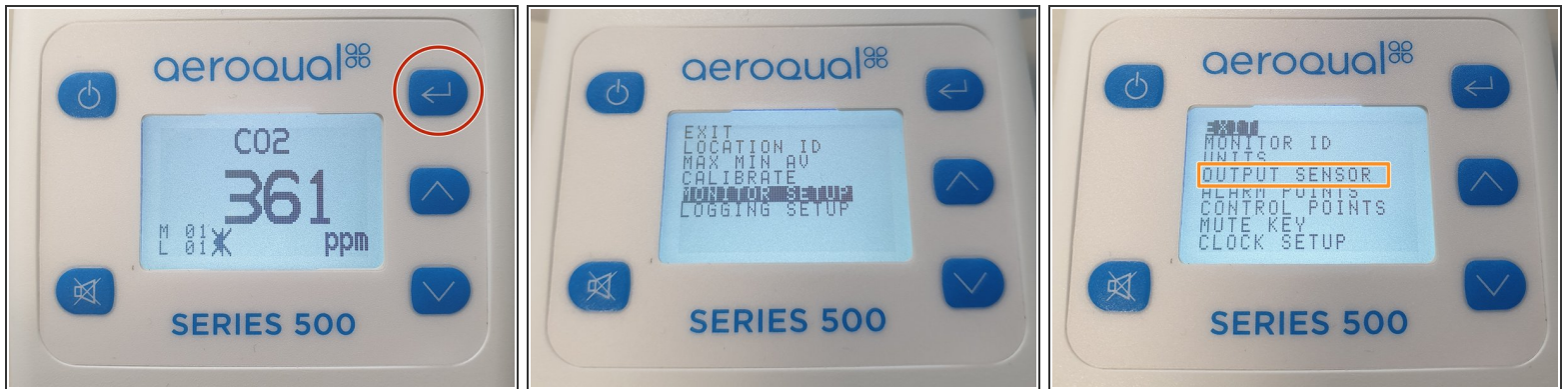
Written By: StJohn Vuetilovoni



INTRODUCTION

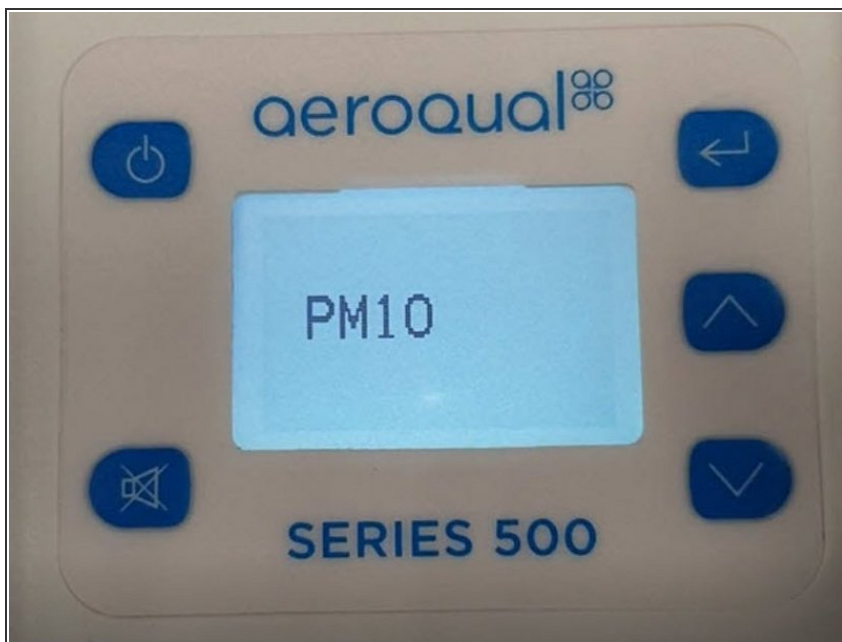
The output sensor selection determines which sensor parameter the alarm, control points and buzzer refer to.

Step 1 — Enter output setup



- Press the **ENTER** button and select **MONITOR SETUP** from the main menu.
- Select **OUTPUT SENSOR** from the secondary menu.

Step 2 — Output sensor



- Use the **UP/DOWN** buttons to select the required parameter.
- Press **ENTER** to confirm the selection and return to the setup menu.
- ⓘ The 0-5V analog signal also operates on the selected sensor and measurement range.

For further support, contact [Technical Support](#).