



Set alarm points

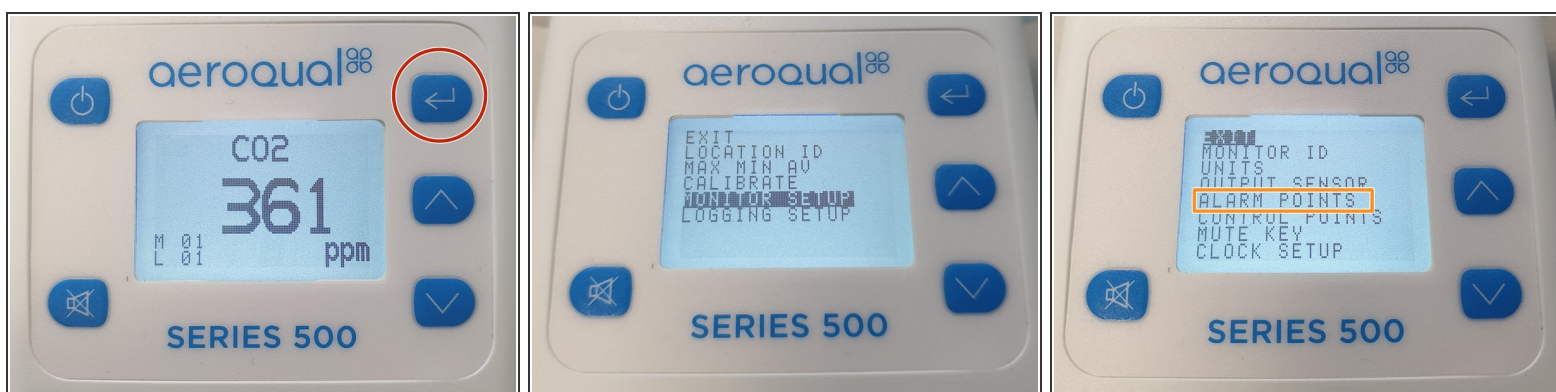
Written By: StJohn Vuetilovoni



INTRODUCTION

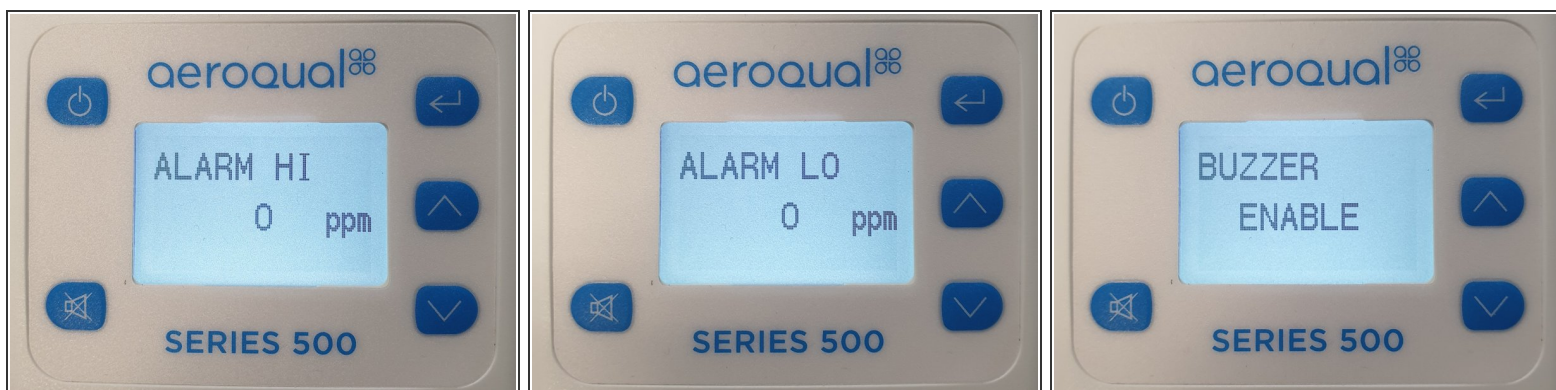
Use this guide to set alarm points for your monitor.

Step 1 — Enter alarm setup



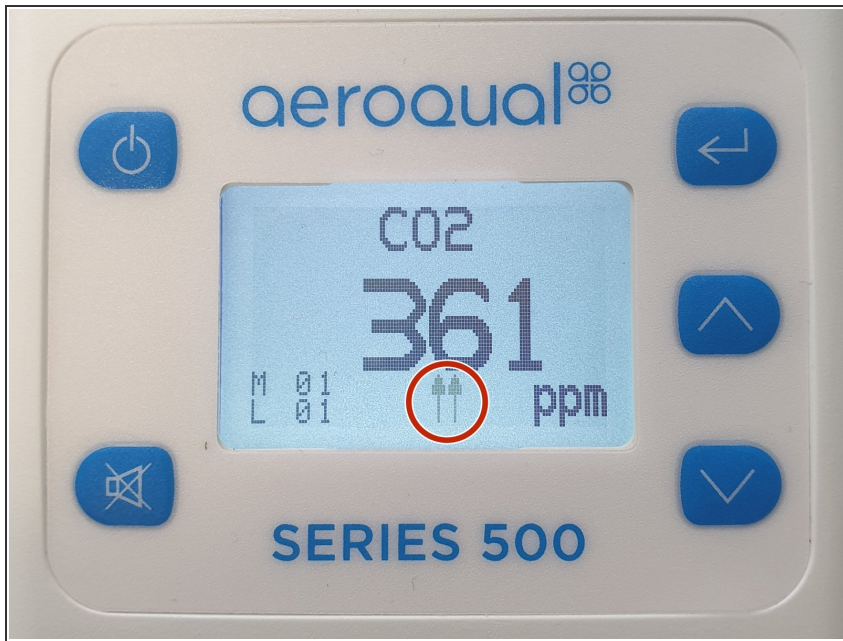
- Press the **ENTER** button and select **MONITOR SETUP** from the main menu.
- Select **ALARM POINTS** from the secondary menu.

Step 2 — Change set points



- Use the **UP/DOWN** buttons to select the required high (**HI**) concentration set point.
- Press **ENTER** to confirm the change.
- Use the **UP/DOWN** buttons to select the required low (**LO**) concentration set point.
- Press **ENTER** to confirm the change.
- Use the **UP/DOWN** buttons to **ENABLE** the alarm.
- Press **ENTER** to confirm the selections and return to the main menu.

Step 3 — View alarm indicators



- When the high concentration set point is exceeded, two upward arrows appear on the main display accompanied by a fast beep.
- When the low concentration set point is exceeded, two downward arrows appear on the main display accompanied by a slow beep.

For further support, contact [Technical Support](#).