

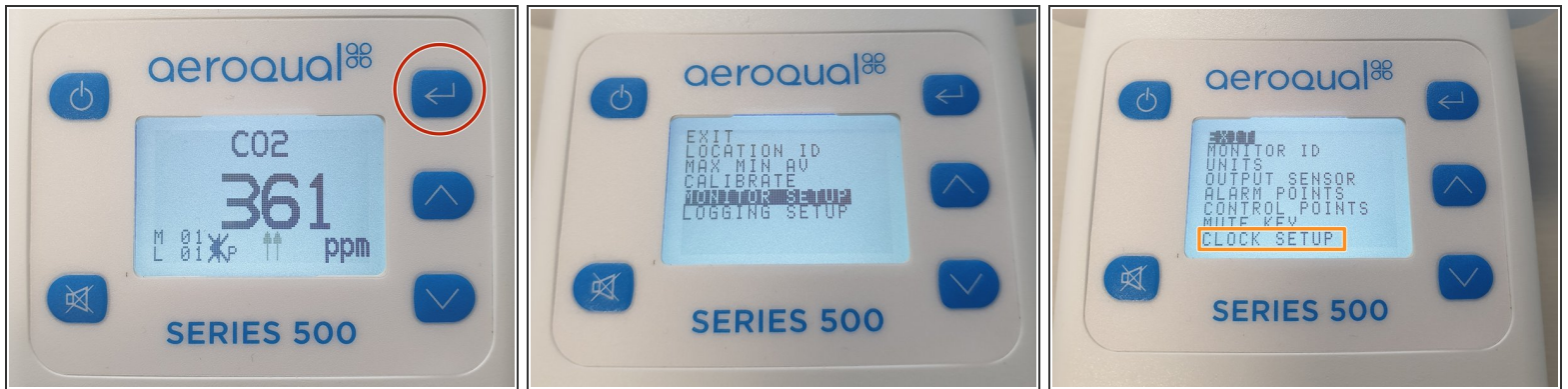


Set date and time

Written By: StJohn Vuetilovoni

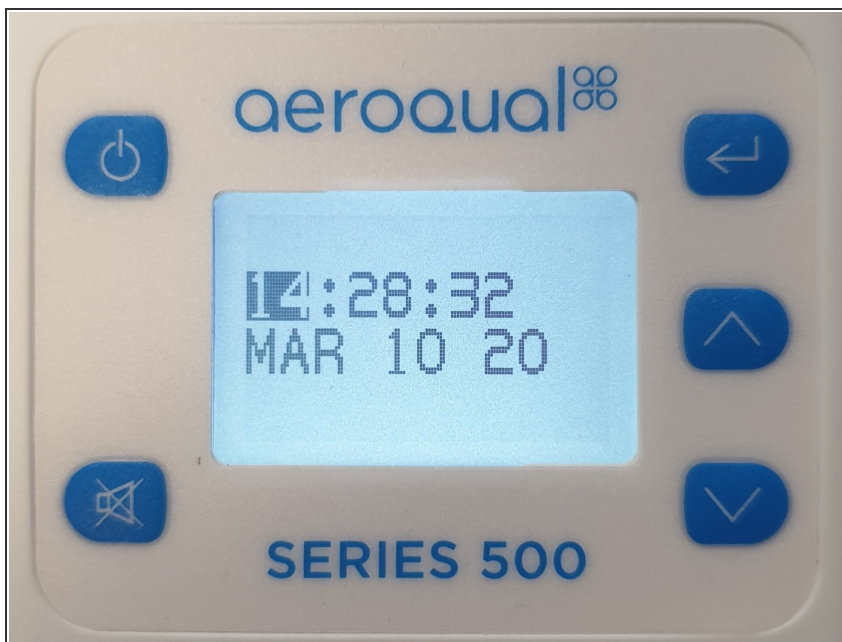


Step 1 — Enter clock setup



- Press the **ENTER** button and select **MONITOR SETUP** from the main menu.
- Select **CLOCK SETUP** from the secondary menu.

Step 2 — Change date and time



- ❗ The clock is 24-hour (eg. 14:28 = 2:28pm). The hour is highlighted, ready to be changed.
- Use the **UP/DOWN** buttons until the correct hour displays.
- Press **ENTER** to confirm the change. The minutes become highlighted.
- Repeat steps for minutes, seconds, month, day and year.
- Use the **UP/DOWN** buttons to select **EXIT** and return to the readings screen.

For further support, contact [Technical Support](#).