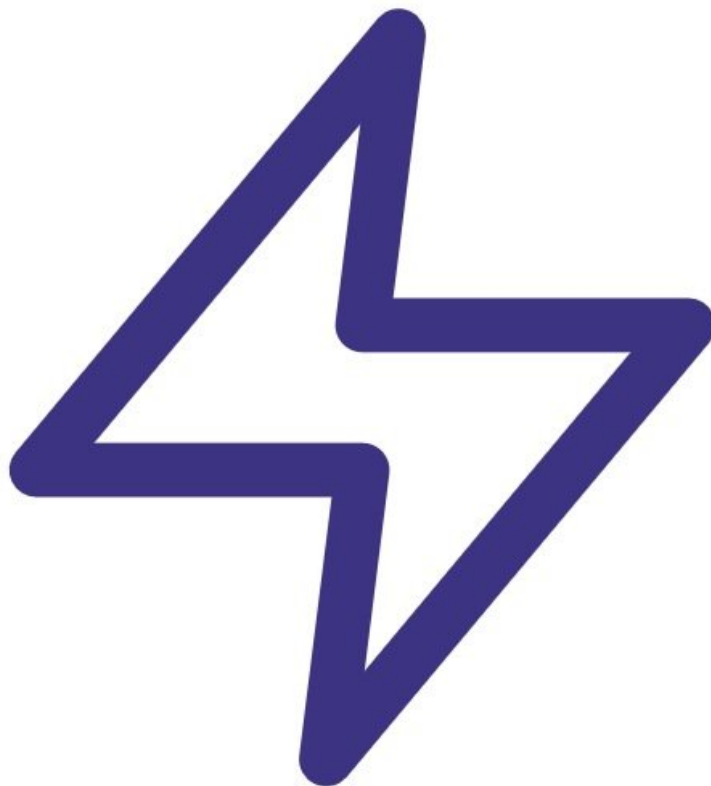




# Power on monitor

Written By: StJohn Vuetilovoni

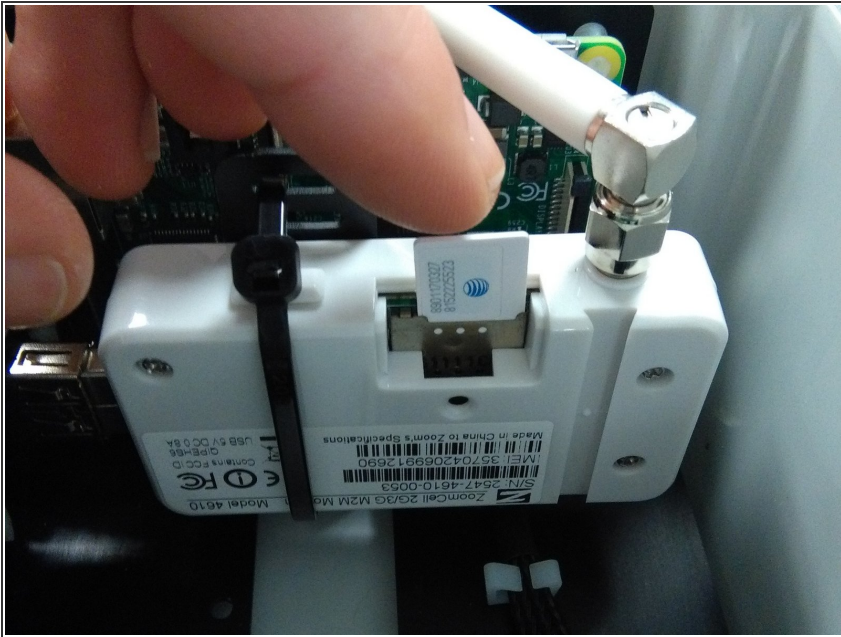




## TOOLS:

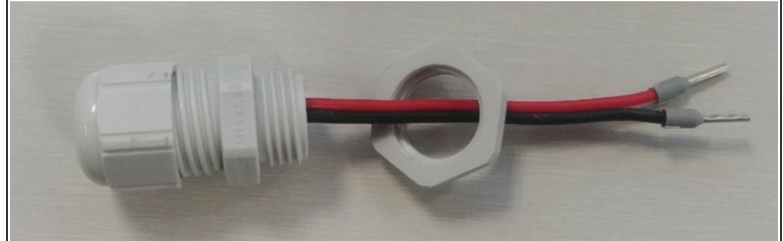
- [Small flat head screwdriver](#) (1)
-

## Step 1 — Insert SIM



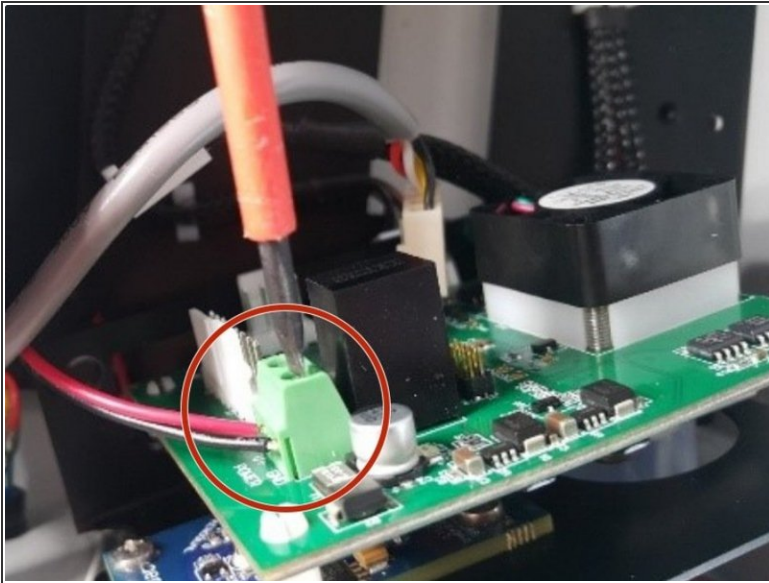
- If you have a Zoomtel modem fitted, [click here and follow the steps to insert the SIM card](#). This ensures the AQY 1 automatically connects to Aeroqual Cloud when you power up.
- If you don't have a modem, you can connect to the AQY 1 after it powers up using Wi-Fi.

## Step 2 — Purchase power supply



- Purchase a 12 Vdc, 24 W power supply that complies with your local regulations.
- ⓘ Aeroqual recommends a power supply with 11-32 Vdc range max and 150 mVp-p ripple and noise max.
- If desired, you can buy an AC to DC power supply kit from Aeroqual (part AQY 1 MAP KIT). It comes with either a UK, US , EU or ANZ power plug, cable gland with DC connector and wiring.
  - UK Plug
  - ANZ Plug
  - US Plug
  - EU Plug

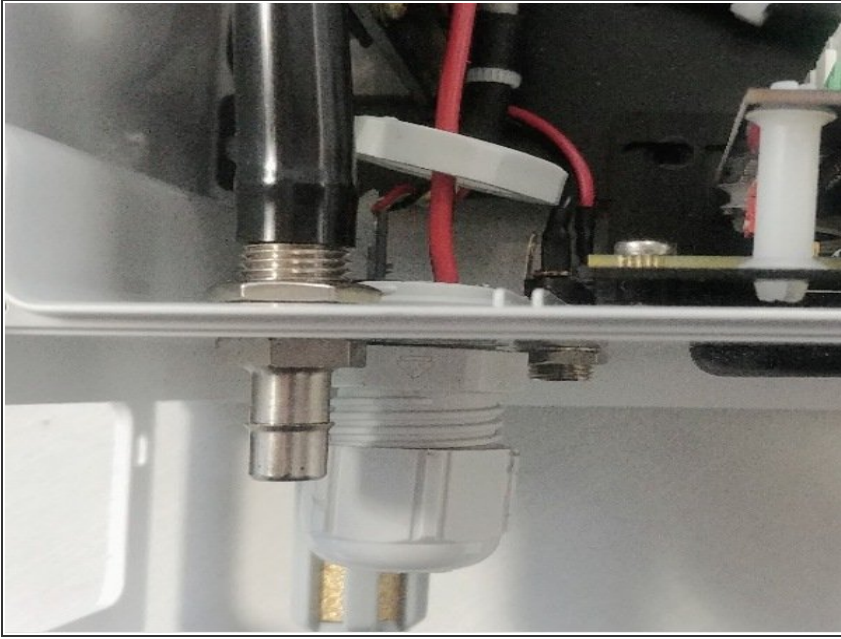
### Step 3 — Remove retaining nut



**⚠** The next 2 steps in this guide show the wiring procedure for the AC to DC power supply kit from Aeroqual.

- If you haven't already done so to insert the SIM card, remove the front cover by loosening all 4 screws (they won't come out of the casing).
- Use a small flat blade screw driver to loosen the V+ and GND headers connecting the standard power jack to the PCB. Note the location of the V+ and GND ports (printed on the board for reference).
- Unscrew the power connector retaining nut from the outside of the enclosure and remove the plug.

## Step 4 — Wire power supply



- Insert the new DC connector assembly and thread wires through the new retaining nut.
- Hold the new assembly in place against the bottom of the enclosure, then being careful not to cross-thread, attach the new retaining nut to firm finger tightness.
- Connect the wires to appropriate power header and tighten screws. Check the wires are secure and the new wiring isn't rubbing on other components.
- Replace the front cover ensuring the front vent is at the top with the opening pointing down.

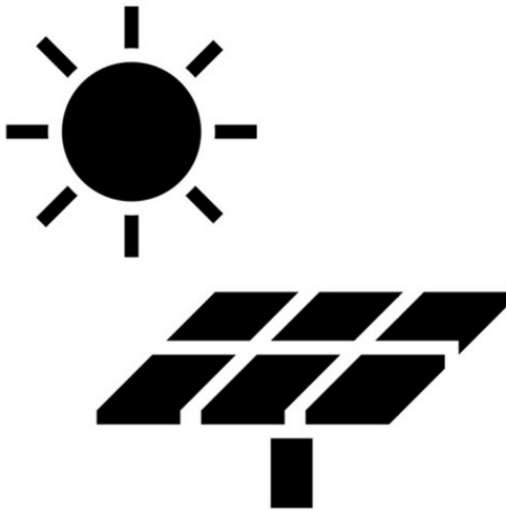


## Step 5 — Power on monitor



- Connect the power supply to your mains power socket.
- If you remove the lid, you'll see a green light flash for 60 seconds. After flashing for 60 seconds, it stays on.
- After 60 seconds you should hear the internal fan switch on, then on and off every few seconds. This indicates successful power on.

## Step 6 — Solar options



- The AQY 1 can be powered by solar electricity if the supply output delivers 12VDC / 24W / 2A.
- For information about off-grid solar solutions, [see here](#).

For further support, contact [Technical Support](#).